

LOC/DME I-HFW	APP CRS	Rwy Idg	8L	8R
109.3	095°	TDZE	8800	9999
Chan 30		Apt Elev	1015	1024
			1026	1026

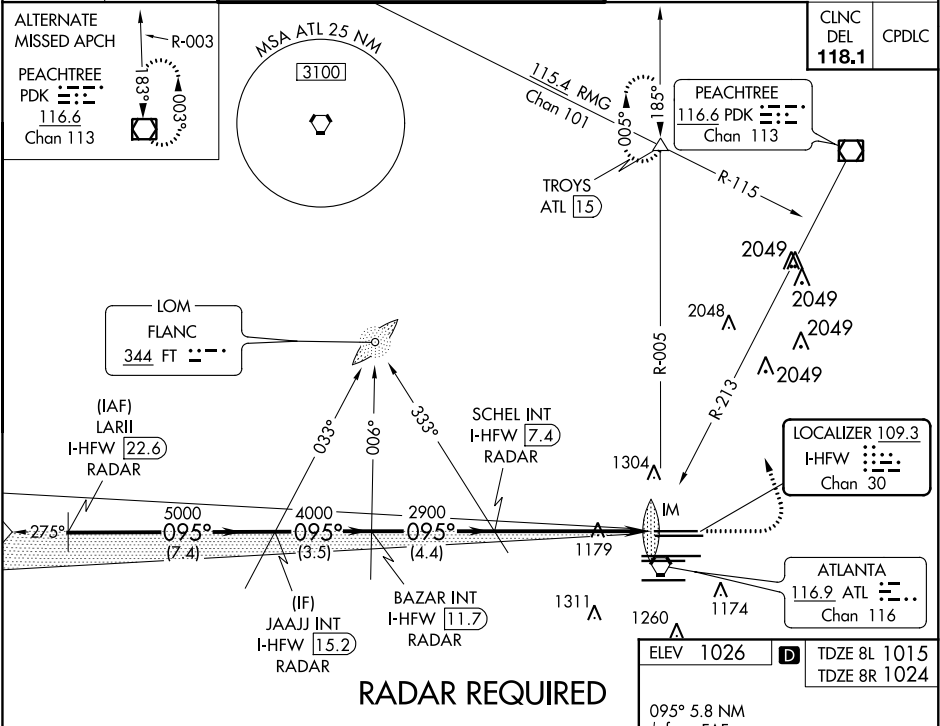
ILS or LOC RWY 8L
HARTSFIELD-JACKSON ATLANTA INTL (ATL)

▼ Inop table does not apply to Sidestep 8R.
Simultaneous approach authorized with Rwy 9L or 9R or 10, or Rwys 9L and 10. ADF or DME or RADAR required.

Rwy 8L
ALS-F-2

MISSED APPROACH: Climb to 1500 then climbing left turn to 3500 on ATL VORTAC R-005 to TROYS INT/ATL 15 DME and hold.

D-ATIS	ATLANTA APP CON	ATLANTA TOWER	ALL	GND CON	ALL
ARR 119.65		8L-26R 8R-26L 9L-27R 9R-27L 10-28 RWYS	[8L-26R,8R-26L] [9L-27R,9R-27L] 10-28 RWYS		
DEP 125.55	127.9 379.9	119.1 125.325 123.85 119.3 119.5 254.4	121.9	121.75	121.65 254.4



VGSi and ILS glidepath not coincident (VGSi Angle 3.00/TCH 70).				
*LOC only.				
LARII I-HFW 22.6 RADAR	JAAJ INT I-HFW 15.2 RADAR	BAZAR INT I-HFW 11.7 RADAR	SCHL INT I-HFW 7.4 RADAR	IM I-HFW 1.6
5000	4000	2900	2900	2900
7.4 NM	3.5 NM	4.4 NM	4.7 NM	1 NM
CATEGORY	A	B	C	D
S-ILS 8L	1215/18 200 (200-½)			
S-LOC 8L	1440/24	425 (500-½)	1440/40	425 (500-¾)
SIDESTEP 8R	1440/55	416 (500-1)	1440-1½ 416 (500-1½)	1440-2 416 (500-2)

