

ATLANTA, GEORGIA

AL-26 (FAA)

A) ILS PRM RWY 26R (SA CAT I & II)
(SIMULTANEOUS CLOSE PARALLEL)

HARTSFIELD-JACKSON ATLANTA INTL (ATL)

LOC/DME I-GXZ 110.1 Chan 38	APP CRS 275°	Rwy Idg 8500 TDZE 990 Apt Elev 1026
-------------------------------------------------	------------------------	----------------------------------------------------------------

▼ Simultaneous close parallel approach authorized with ILS PRM and RNAV PRM Rwy 27R or 27L or 28, or Rwys 27R and 28, or Rwys 27L and 28. Procedure not authorized when glideslope not available. Dual VHF comm required. See additional requirements on AAUP. SA CAT I: Requires specific OPSPEC, MSPEC, or LOA approval and use of HUD to DH. SA CAT II: Reduced lighting: Requires specific OPSPEC, MSPEC, or LOA approval and use of autoland or HUD to touchdown.


MALSR





MISSED APPROACH: Climb to 1400 then climbing right turn to 3500 on ATL VORTAC R-005 to TROYS INT/ATL 15 DME and hold.

D-ATIS	ATLANTA	ATLANTA TOWER						ALL	GND CON			
ARR 119.65	APP CON	8L-26R	8R-26L	9L-27R	9R-27L	10-28	RWYS		(8L-26R,8R-26L)	(9L-27R,9R-27L)	10-28	RWYS
DEP 125.55	127.9 379.9	119.1	125.325	123.85	119.3	119.5	254.4		121.9	121.75	121.65	254.4
				PRM	126.9							

ALT MISSED
APCH FIX

PEACHTREE
PDK 

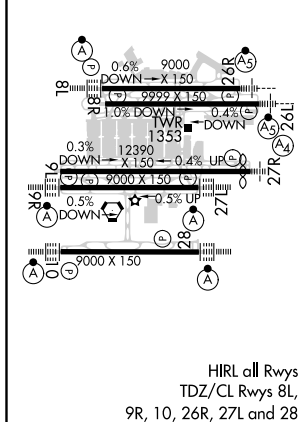
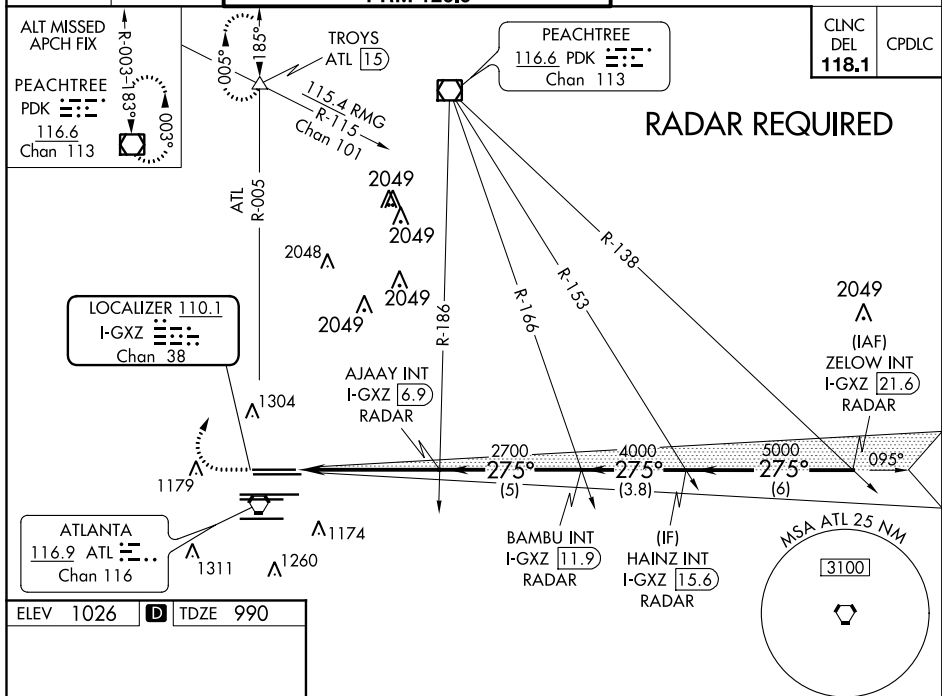
116.6
Chan 113

 R-003-183°  003°

PEACHTREE
11 / 11 PDK • — •

CLNC DEL 118.1	CPDLC
-----------------------------	-------

RADAR REQUIRED



VGSi and ILS glidepath not coincident
(VGSi Angle 3.00°/TCH 69).

1400 3500 TROYS
ATL R-005 △

AJAAY INT I-GXZ [6.9] RADAR
BAMBU INT I-GXZ [11.9] RADAR
HAZNZ INT I-GXZ [15.6] RADAR
ZELOW INT I-GXZ [21.6] RADAR

2700 275° 5000
4000 5000
GS 3.00°
TCH 55

1149° 5.2 NM 5 NM 3.8 NM 6 NM

CATEGORY	A	B	C	D
S-ILS 26R	SA CAT I	RA 170/14	150 DA 1140	
S-ILS 26R	SA CAT II	RA 110/12	100 DA 1090	

SA CATEGORY I & II ILS - SPECIAL AIRCREW
& AIRCRAFT CERTIFICATION REQUIRED

ATLANTA, GEORGIA
Amdt 3 18SEP14

33°38'N-84°26'W HARTSFIELD-JACKSON ATLANTA INTL (ATL)

ILS PRM RWY 26R (SA CAT I & II) (SIMULTANEOUS CLOSE PARALLEL)

SE-4, 03 DEC 2020 to 31 DEC 2020