

ATLANTA, GEORGIA

AL-26 (FAA)

ILS PRM RWY 27L

LOC/DME I-FSQ <b><u>108.5</u></b> Chan <b>22</b>	APP CRS <b>275°</b>	Rwy Idg TDZE Apt Elev	<b>8865</b> <b>999</b> <b>1026</b>
--	------------------------	-----------------------------	--

(SIMULTANEOUS CLOSE PARALLEL)

HARTSFIELD-JACKSON ATLANTA INTL (ATL)


**T** Simultaneous close parallel approach authorized with ILS PRM and RNAV PRM Rwy 26R or 26L or 28, or Rwy 26R and 28, or Rwy 26L and 28. Procedure not authorized when glideslope not available. Dual VHF comm required. See additional requirements on AAUP.

ALSF-2

**MISSED APPROACH:** Climb to 1400 then climbing left turn to 4000 on ATL VORTAC R-273 to TEMPO INT/ATL 30.3 DME/RADAR and hold.

[illegible]

	MISSED APCH FIX
--	-----------------

PEACHTREE  
6.6 PDK 

CLNC  
DEL  
**118.1**

CPDLC

ALTERNATE MISSED  
APCH FIX 4

TEMPO  
LGC 34.7

RADAR

LOCALIZER 108.5  
I-FSQ  
Chgn 22

Λ 1304

1179A

1311.

ATLANTA  
6.9 ATL   
Chan 116

DEPOT I  
I-FSQ 7  
RADAR

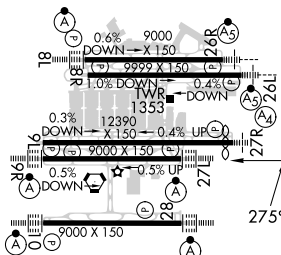
GRMPI  
I-FSQ [   
RADA

SEJA  
I-FSQ

ROM  
I-FSC  
RA

I-FSG

ELEV	1026	<b>D</b>	TDZE	999
------	------	----------	------	-----



HIRL all Rwy's  
TDZ/CL Rwy's 8L, 9R,  
10, 26R, 27L and 28

## RADAR REQUIRED

1400	4000	TEMPO	VGSI and ILS glidepath not coincident (VGSI Angle 3.00/TCH 79).	SLVAA I-FSQ <span style="border: 1px solid black; padding: 2px;">22.5</span>
------	------	-------	---	---

ATL  
R-273

△

SEJAY INT ROMMM INT RADAR  
I-FSQ 15.6 I-FSQ 19.1

DEPOT INT	GRMPI INT	RADAR	RADAR
I-FSQ 7.2	I-FSQ 11.9		275° 7000

IM	RADAR	RADAR			
	2800	4000	5000	6000	7000

[illegible]

						TCH 58	
0.2	5.3 NM	4.7 NM	3.8 NM	3.5 NM	3.5 NM		

CATEGORY	A	B	C	D
S-ILS 27L	1199/18 200 (200-1/2)			

ATLANTA, GEORGIA  
Amdt 3A 15OCT15

33°38'N-84°26'W HARTSFIELD-JACKSON ATLANTA INTL (ATL)

ILS PRM RWY 27L (SIMULTANEOUS CLOSE PARALLEL)

SE-4, 03 DEC 2020 to 31 DEC 2020