

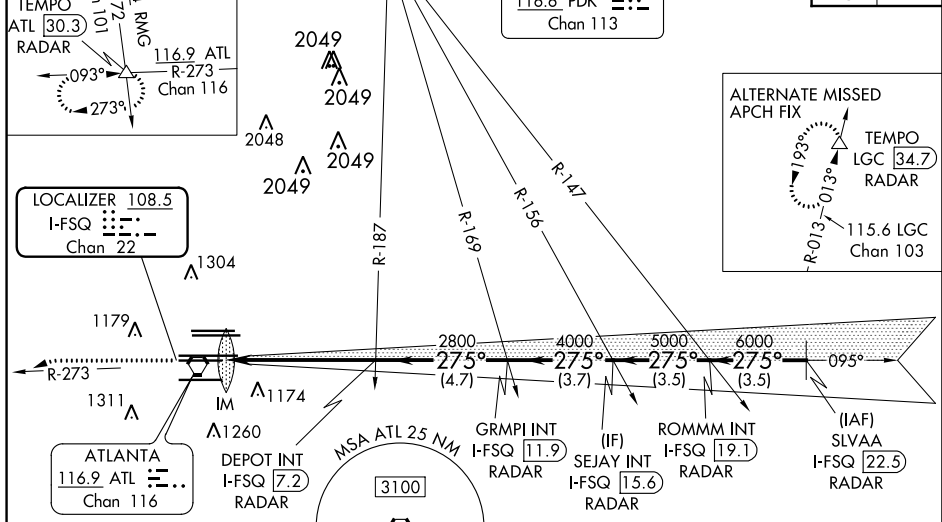
LOC/DME I-FSQ 108.5 Chan 22	APP CRS 275°	Rwy Idg TDZE Apt Elev	8865 999 1026
---	------------------------	-----------------------------	--

ILS PRM RWY 27L (CAT II) **(SIMULTANEOUS CLOSE PARALLEL)** **HARTSFIELD-JACKSON ATLANTA INTL (ATL)**

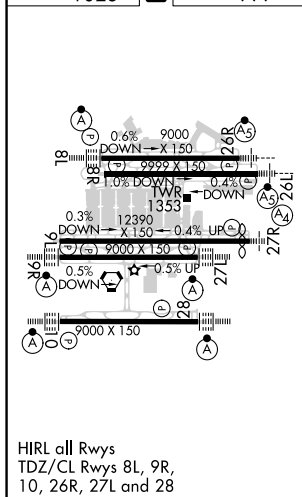
Simultaneous close parallel approach authorized with ILS PRM and RNAV PRM Rwy 26R or 26L or 28, or Rwy 26R and 28, or Rwy 26L and 28. Procedure not authorized when glideslope not available. Dual VHF comm required. See additional requirements on AAUP.	ALSIF-2 	MISSED APPROACH: Climb to 1400 then climbing left turn to 4000 on ATL VORTAC R-273 to TEMPO INT/ATL 30.3 DME and hold.
--	--------------------	---

D-ATIS ARR 119.65 DEP 125.55	ATLANTA APP CON 127.9 379.9	ATLANTA TOWER 8L-26R 8R-26L 9L-27R 9R-27L 10-28 RWYS 119.1 125.325 123.85 119.3 119.5 254.4 PRM 132.55	ALL RWYS 121.9 121.75 121.65 254.4	GND CON 121.9 121.75 121.65 254.4	ALL RWYS
--	--	---	---	---	-------------

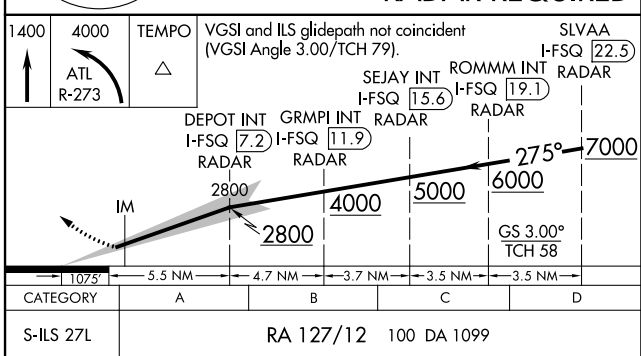
MISSSED APCH FIX	CLNC DEL 118.1	CPDLC
------------------	--------------------------	-------



ELEV 1026	D	TDZE 999
------------------	----------	-----------------



RADAR REQUIRED



CATEGORY II ILS- SPECIAL AIRCREW & AIRCRAFT CERTIFICATION REQUIRED