

ATLANTA, GEORGIA

AL-26 (FAA)

ILS PRM RWY 8L (CAT II & III) (SIMULTANEOUS CLOSE PARALLEL) HARTSFIELD-JACKSON ATLANTA INTL (ATL)

LOC/DME I-HFW 109.3 Chan 30	APP CRS 095°	Rwy Idg TDZE Apt Elev	8800 1015 1026
---	------------------------	-----------------------------	---

Simultaneous close parallel approach authorized with ILS PRM and RNAV PRM Rwy 9L or 9R or 10, or Rwy 9L and 10, or Rwy 9R and 10. Procedure not authorized when glideslope not available. Dual VHF comm required. See additional requirements on AAUP. ADF or DME or RADAR required.

ALSF-2



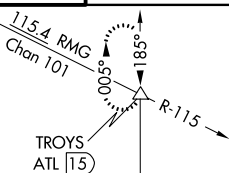
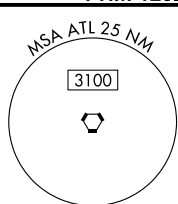
MISSED APPROACH: Climb to 1500 then climbing left turn to 3500 on ATL VORTAC R-005 to TROYS INT/ATL 1.5 DME and hold.

D-ATIS ARR 119.65 DEP 125.55	ATLANTA APP CON 127.9 379.9	ATLANTA TOWER 8L-26R 8R-26L 9L-27R 9R-27L 10-28 RWYS 119.1 125.325 123.85 119.3 119.5 254.4 PRM 126.9	ALL RWYS 121.9 121.75 121.65 254.4	GND CON (8L-26R, 8R-26L) (9L-27R, 9R-27L) 10-28 121.9 121.75 121.65 254.4	ALL RWYS
--	--	--	---	--	-------------

ALTERNATE
MISSED APCH
FIX

PEACHTREE
PDK
116.6
Chan 113

R-003
183°
003°

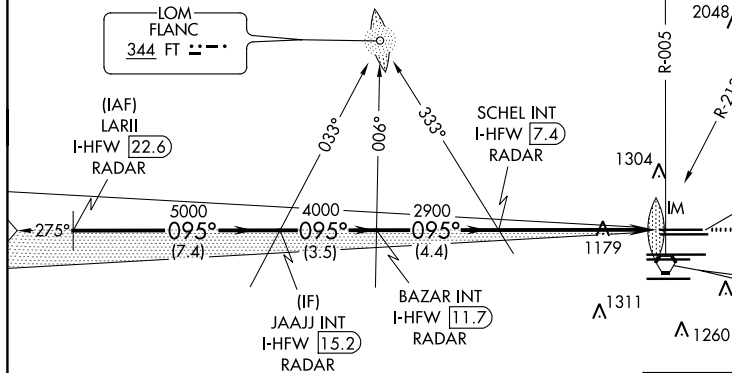


CINC DEL 118.1	CPDLC
-----------------------------	-------

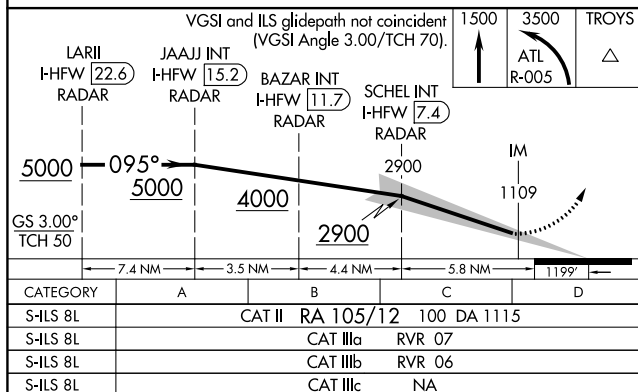
PEACHTREE
116.6 PDK
Chan 113

LOCALIZER **109.3**
I-HFW
Chan 30

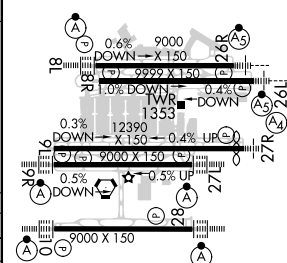
ATLANTA
116.9 ATL
Chan 116



RADAR REQUIRED



ELEV 1026 D TDZE 1015



CATEGORY II & III ILS - SPECIAL AIRCREW & AIRCRAFT CERTIFICATION REQUIRED

HIRL all Rwy's
TDZ/CL Rwy's 8L, 9R, 10, 26R,
27L and 28

ATLANTA, GEORGIA

33°38'N-84°26'W

HARTSFIELD-JACKSON ATLANTA INTL (ATL)

Amdr 2 18SEP14

ILS PRM RWY 8L (CAT II & III) (SIMULTANEOUS CLOSE PARALLEL)