

AA) ILS PRM RWY 8R
(SIMULTANEOUS CLOSE PARALLEL)
HARTSFIELD-JACKSON ATLANTA INTL (ATL)

LOC/DME I-ATL 109.9 Chan 36	APP CRS 095°	Rwy Idg 9999 TDZE 1024 Apt Elev 1026
---	------------------------	---

T Simultaneous close parallel approach authorized with ILS PRM and RNAV PRM Rwy 9L or 9R or 10, or Rwy 9L and 10, or Rwy 9R and 10. Procedure not authorized when glideslope not available. Dual VHF comm required. See additional requirements on AAUP. ADF or DME or RADAR required.

MISSED APPROACH: Climb to 1500 then climbing left turn to 3500 on ATL VORTAC R-005 to TROYS INT/ATL 15 DME and hold. (TACAN aircraft climb to 1500 then climbing left turn to 3500 on heading 005° for RADAR vectors.)

D-ATIS	ATLANTA	ATLANTA TOWER						ALL	GND CON			ALL
ARR 119.65	APP CON	8L-26R	8R-26L	9L-27R	9R-27L	10-28	RWYS	(8L-26R,8R-26L)	(9L-27R,9R-27L)	10-28	RWYS	
DEP 125.55	127.9 379.9	119.1	125.325	123.85	119.3	119.5	254.4	121.9	121.75	121.65	254.4	
				PRM	126.9							

ALTERNATE
MISSED APCH
FIX
PEACHTREE
PDK 
116.6
Chgn 113

R-003-183°

MSA ATL 25 NM


3100

115.4 RW
Chan 101

185°

CLNC
DEL
118 1

CPDLC

PEACHTREE
116.6 PDK 
Chap 113

LOCALIZER 109.9
I-ATL
Chan 36

ATLANTA
116.9 ATL Ξ ..
Ch. 114

344 FT

HARSN INT
I-ATL 7.2
RADAR

4.

12

ELEV 1026

D	TDZE 1024
---	-----------

RADAR REQUIRED

VGSI and ILS glidepath not coincident
(VGSI Angle 3.00/TCH 67).

1500

3500
ATL
R-005

TROYS

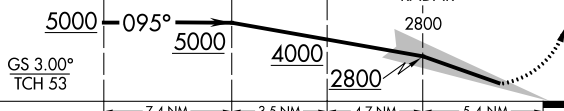
△

GPEAT
I-ATL 22.8
RADAR

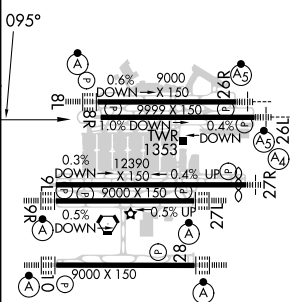
PEARL INT
I-ATL 15.4
RADAR

ATL 11.9

ARSN INT



	7.4 NM		5.5 NM		4.7 NM		3.4 NM	
CATEGORY	A	B	C	D	E			
S-11S 8R	1278/40 254 (300-3/4)							



HIRL all Rwys
TDZ/CL Rwys 8L, 9R, 10, 26R,
27L and 28