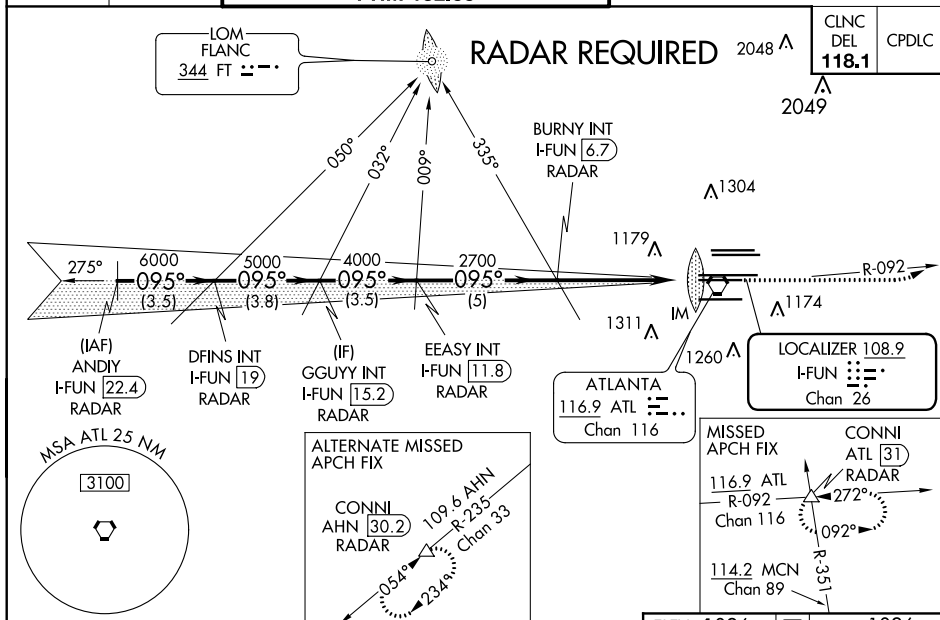


ILS PRM RWY 9R (CAT II & III)
(SIMULTANEOUS CLOSE PARALLEL)
HARTSFIELD-JACKSON ATLANTA INTL (ATL)

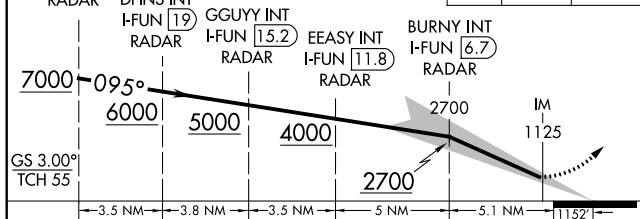
ALSF-2

MISSED APPROACH: Climb to 1500 then climbing left turn to 4000 on ATL VORTAC R-092 to CONNI INT/ATL 31 DME/RADAR and hold.

D-ATIS	ATLANTA	ATLANTA TOWER						ALL		GND CON	ALL
ARR 119.65	APP CON	8L-26R	8R-26L	9L-27R	9R-27L	10-28	RWYS	(8L-26R,8R-26L)	(9L-27R,9R-27L)	10-28	RWYS
DEP 125.55	127.9 379.9	119.1	125.325	123.85	119.3	119.5	254.4	121.9	121.75	121.65	254.4
		PRM 132.55									

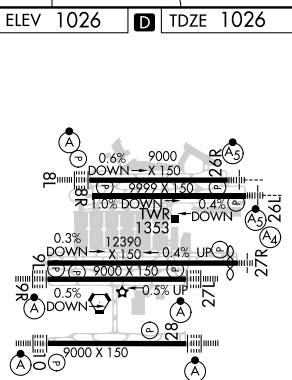


ANDIY I-FUN 22.4 RADAR DEINS INT	VGS1 and ILS glidepath not coincident (VGS1 Angle 3.00/TCH 70).	1500 	4000 ATL R-092	CONNI
--	--	----------	----------------------	-----------



CATEGORY	A	B	C	D
S-ILS 9R	CAT II RA 118/12 100 DA 1126			
S-ILS 9R	CAT IIIa		RVR 07	
S-ILS 9R	CAT IIIb		RVR 03	
S-ILS 9R	CAT IIIc		NA	

CATEGORY II & III ILS - SPECIAL AIRCREW
& AIRCRAFT CERTIFICATION REQUIRED



HIRL all Rwys
TDZ/CL Rwys 8L, 9R, 10, 26R,
27L and 28

ILS PRM RWY 9R (CAT II & III) (SIMULTANEOUS CLOSE PARALLEL)