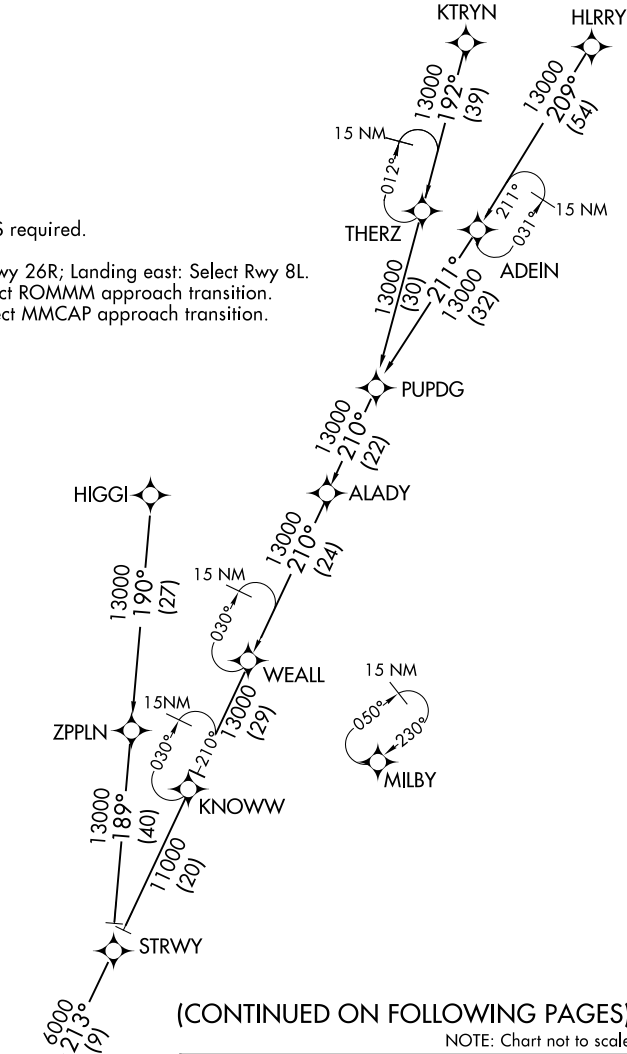


D-ATIS ARR  
119.65  
ATLANTA APP CON  
128.525 379.9

- NOTE: RADAR required.  
NOTE: RNAV 1.  
NOTE: DME/DME/IRU or GPS required.  
NOTE: Turbojet aircraft only.  
NOTE: Landing west: Select Rwy 26R; Landing east: Select Rwy 8L.  
NOTE: Landing Rwy 27L: Select ROMMM approach transition.  
NOTE: Landing Rwy 27R: Select MMCAP approach transition.



ONDRE

13000

Landing west

Expect 250K

See following page

HIGGI TRANSITION (HIGGI.ONDRE1):

For TYS departures or assigned by ATC only.

HLRRY TRANSITION (HLRRY.ONDRE1)

KTRYN TRANSITION (KTRYN.ONDRE1)

PUPDG TRANSITION (PUPDG.ONDRE1)

STRWY TRANSITION (STRWY.ONDRE1)