

RNAV (GPS) PRM RWY 27L (SIMULTANEOUS CLOSE PARALLEL) HARTSFIELD-JACKSON ATLANTA INTL (ATL)

WAAS CH 65700 W27A	APP CRS 275°	Rwy Idg 8865 TDZE 999 Apt Elev 1026
--	------------------------	--

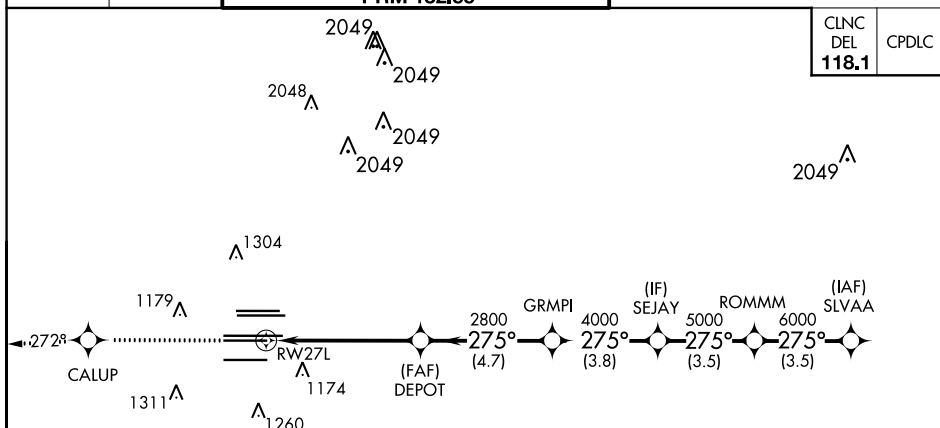
For uncompensated Baro-VNAV systems, LNAV/VNAV NA below -7°C (20°F) or above 54°C (130°F). DME/DME RNP-0.3 NA. Simultaneous close parallel approach authorized with ILS PRM and RNAV PRM Rwy 26R or 26L or 28, or Rwys 26R and 28, or Rwys 26L and 28. Dual VHF Comm required. Use of FD or AP providing RNAV track guidance required during simultaneous operations. See additional requirements on AAUP.

ALSF-2



MISSED APPROACH: Climb to 4000 direct CALUP and on track 272° to TEMPO and hold.

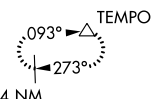
D-ATIS	ATLANTA APP CON	ATLANTA TOWER	ALL RWYS	GND CON	ALL RWYS
ARR 119.65		8L-26R 8R-26L 9L-27R 9R-27L 10-28 RWYS	(8L-26R, 8R-26L) (9L-27R, 9R-27L) 10-28		
DEP 125.55	127.9 379.9	119.1 125.325 123.85 119.3 119.5 254.4 PRM 132.55	121.9	121.75 121.65 254.4	



CINC
DEL
118.1

CPDLC

MISSED APCH FIX



ELEV 1026 D TDZE 999

