

WAAS CH 61299 W28A	APP CRS 275°	Rwy Idg TDZE 998 Apt Elev 1026
--	------------------------	--

RNAV (GPS) Y RWY 28
HARTSFIELD-JACKSON ATLANTA INTL (ATL)

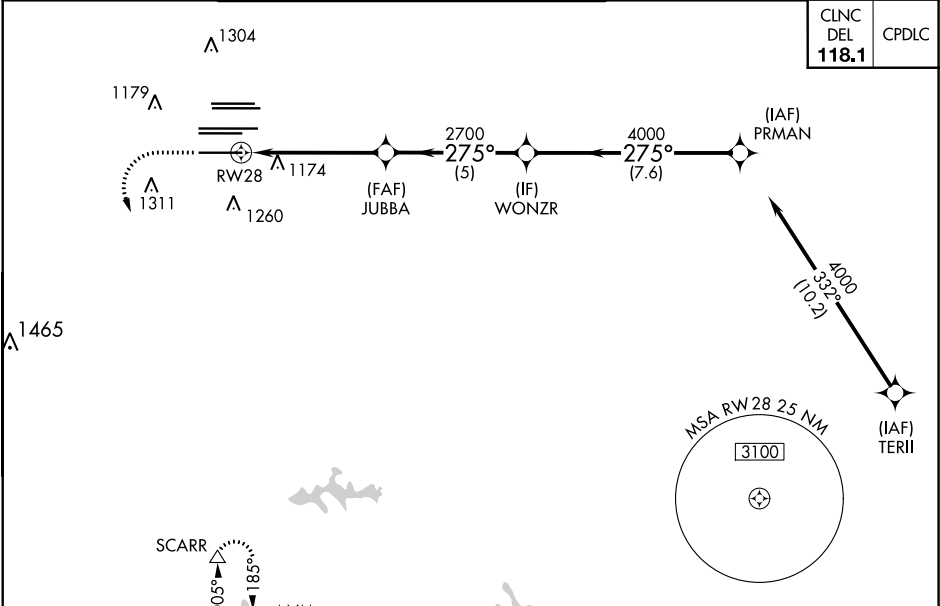
▼ For uncompensated Baro-VNAV systems, LNAV/VNAV NA below -7°C (20°F) or above 54°C (130°F). Simultaneous approach authorized with Rwy 26R or 26L or 27R, or Rwys 26R and 27R. DME/DME RNP-0.3 NA. LNAV procedure NA during simultaneous operations. Use of FD or AP providing RNAV track guidance required during simultaneous operations.

ALSIF-2

A

MISSED APPROACH:
Climb to 1500 then climbing left turn to 3000 direct SCARR and hold.

D-ATIS	ATLANTA	ATLANTA TOWER						ALL	GND CON			ALL	
ARR	APP CON	8L-26R	8R-26L	9L-27R	9R-27L	10-28	RWYS	(8L-26R,8R-26L)	(9L-27R,9R-27L)	10-28	RWYS		
DEP	119.65												
DEP	125.55	127.9	379.9	119.1	125.325	123.85	119.3	119.5	254.4	121.9	121.75	121.65	254.4



ELEV 1026 **D** **TDZE 998**

1500 **3000** **SCARR**

***LNAV only.**

***1.2 NM to RW28**

JUBBA **WONZR** **PRMAN**

2700 **4000** **275°** **4000**

GP 3.00° TCH 57

1.2 NM **4 NM** **5 NM** **7.6 NM**

CATEGORY	A	B	C	D
LPV DA		1198/18	200 (200-½)	
LNAV/VNAV DA		1250/24	252 (300-½)	
LNAV MDA	1440/24	442 (500-½)	1440/45	442 (500-¾)

HIRL all Rwys
TDZ/CL Rwys 8L, 9R, 10, 26R, 27L and 28

275° to RW28