

LOC I-AGS 110.5	APP CRS 352°	Rwy Idg 8001 TDZE 136 Apt Elev 146	ILS or LOC RWY 35 AUGUSTA RGNL AT BUSH FIELD (AGS)
---------------------------	------------------------	---	---

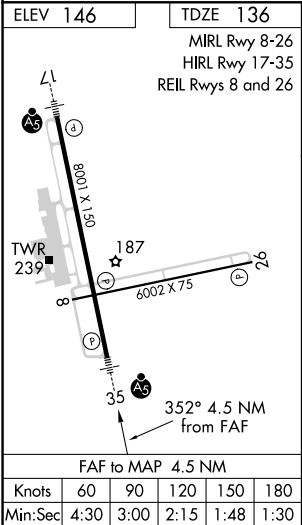
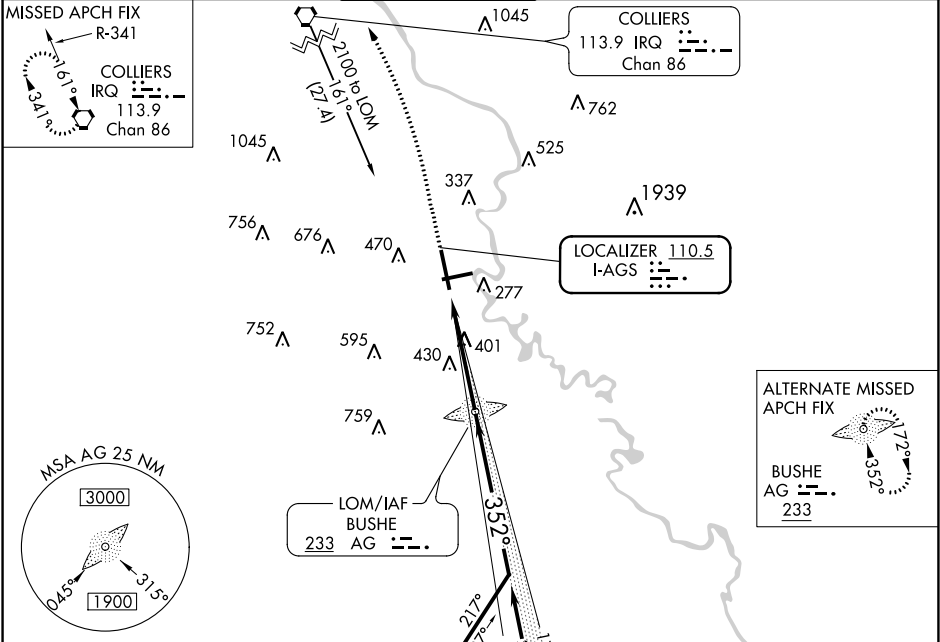
⚠ When local altimeter setting not received, use Daniel Field altimeter setting and increase all DA 55 feet and all MDA 60 feet; increase S-LOC 35 and Circling Cts C/D visibility ¼ mile. When Circling Rwy 8 at night, operational VGSI required, remain on or above VGSI glidepath until threshold. Autopilot coupled approach NA below 940.

ASR

MALSR

MISSED APPROACH:
Climb to 600 then climbing left turn to 2100 direct IRQ VORTAC and hold.

ATIS 132.75	AUGUSTA APP CON ★ 126.8 270.3	AUGUSTA TOWER ★ 118.7 (CTAF) 0 239.3	GND CON 121.9 348.6	CLNC DEL 118.65	UNICOM 122.95
-----------------------	---	--	-------------------------------	---------------------------	-------------------------



<p>600 2100 IRQ</p> <p>AG LOM 1648 172° 2000 352° 1700</p> <p>VGSI and ILS glidepath not coincident (VGSI Angle 3.00/TCH 72).</p> <p>4.5 NM</p>				
CATEGORY	A	B	C	D
S-ILS 35	336/24 200 (200-½)			
S-LOC 35	660/24	524 (600-½)	660/55	524 (600-1)
CIRCLING	780-1	634 (700-1)	780-1¾ 634 (700-1¾)	900-2½ 754 (800-2½)