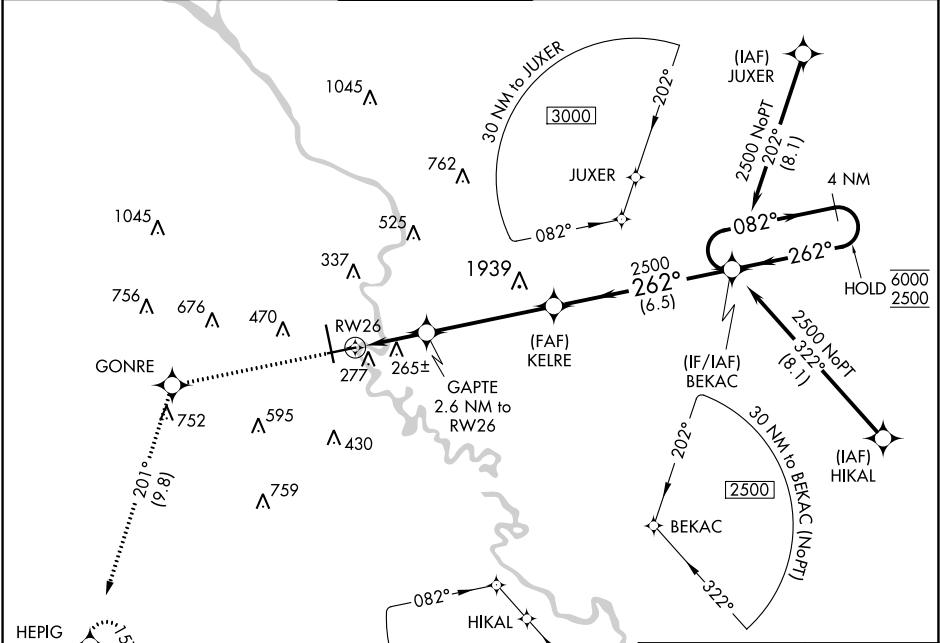


APP CRS	Rwy Idg	6002
262°	TDZE	139
	Apt Elev	146

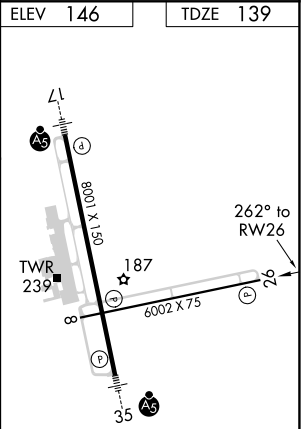
RNAV (GPS) RWY 26
AUGUSTA RGNL AT BUSH FIELD (AGS)

RNP APCH.	MISSED APPROACH: Climb to 3000 direct GONRE and on track 201° to HEPIG and hold.
Rwy 26 helicopter visibility reduction below 3/4 SM NA. VDP NA with Daniel Field altimeter setting. When local altimeter setting not received, use Daniel Field altimeter setting and increase all MDA 60 feet; increase LNAV and Circling Cts C/D visibility 1/4 mile.	

ATIS 132.75	AUGUSTA APP CON ★ 126.8 270.3	AUGUSTA TOWER ★ 118.7 (CTAF) 0 239.3	GND CON 121.9 348.6	CLNC DEL 118.65	UNICOM 122.95
----------------	----------------------------------	---	------------------------	--------------------	------------------



ELEV 146	TDZE 139
3000 GONRE tr 201° HEPIG VGSI and descent angles not coincident (VGSI Angle 3.00/TCH 64).	
KELRE BEKAC Holding Pattern 4 NM	
RW26 GAPTE 2.6 NM to RW26 1020 2500 6000 2500 1 NM to RW26 1.6 NM 4.7 NM 6.5 NM	
CATEGORY	A B C D
LNAV MDA	520-1 381 (400-1) 520-1 381 (400-1 1/2)
CIRCLING	780-1 634 (700-1) 780-1 3/4 634 (700-1 3/4) 900-2 1/2 754 (800-2 1/2)



SE-4, 03 DEC 2020 to 31 DEC 2020

SE-4, 03 DEC 2020 to 31 DEC 2020