

WAAS CH <b>97303</b> <b>W35A</b>	APP CRS <b>352°</b>	Rwy Idg <b>8001</b> TDZE <b>137</b> Apt Elev <b>146</b>
--	------------------------	---

RNAV (GPS) RWY 35  
AUGUSTA RGNL AT BUSH FIELD (AGS)

**T** For uncompensated Baro-VNAV systems, LNAV/VNAV NA below -8°C (18°F) or above 43°C (109°F). Baro-VNAV and VDP NA when using Daniel Field altimeter setting.

**A** DME/DME RNP-0.3 NA. When local altimeter setting not received, use Daniel Field altimeter setting and increase all DA 55 feet and all MDA 60 feet; increase LNAV/VNAV all Cats and Circling Cats C/D visibility ¼ SM, LNAV Cats C/D visibility ½ SM. For inop ALS, increase LNAV Cats C/D visibility to 1 ½ SM. For inop ALS when using Daniel Field altimeter setting, increase LPV all Cats visibility to RVR 5000, and LNAV Cats C/D visibility to 1 ¾ SM.

**ASR**



**MISSED APPROACH:**  
Climb to 2400 direct  
CARDO and hold.

ATIS	AUGUSTA APP CON ★	AUGUSTA TOWER ★	GND CON	CLNC DEL	UNICOM
132.75	126.8 270.3	118.7 (CTAF) 0 239.3	121.9 348.6	118.65	122.95

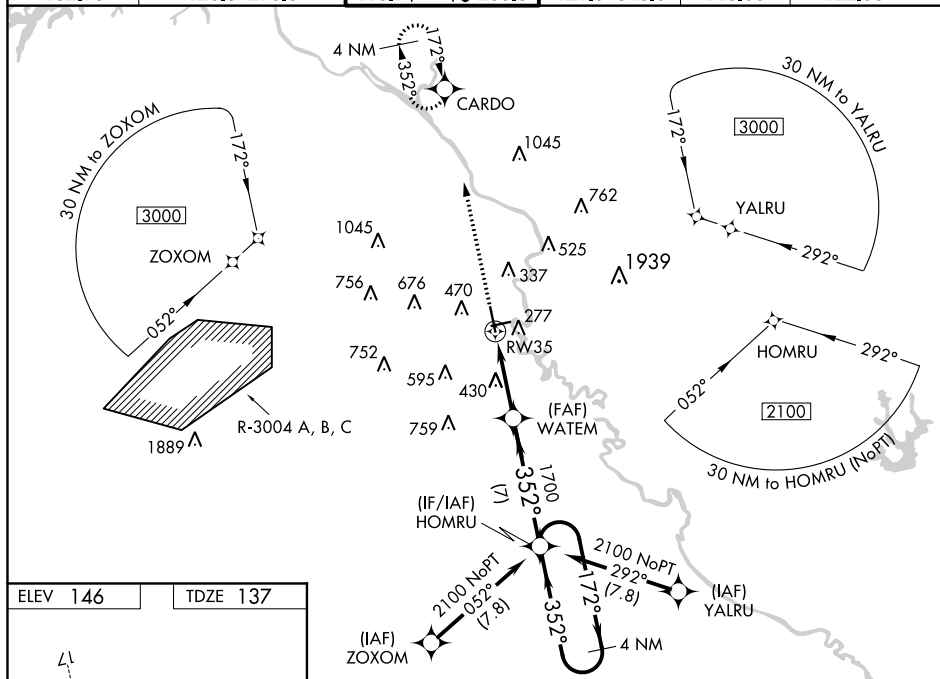


Diagram illustrating the RW35 approach procedure. The diagram shows a 4 NM Holding Pattern at 1700 feet. The approach is a 3.00° TCH 56° glidepath. Key points include: 1.5 NM to RW35, 3.3 NM to WATM, and 7 NM to the holding pattern. The holding pattern is a 4 NM circle with a 172° turn. The approach is labeled '352° to RW35' and '352° to 2100'. The diagram also shows the TWR 239, RW35, and RW26. The diagram is labeled 'MIRL Rwy 8-26', 'HIRL Rwy 17-35', and 'REIL Rwys 8 and 26'.

CATEGORY	A	B	C	D
LPV DA	387/24 250 (300-½)			
LNAV/VNAV DA	657/60 520 (600-1¼)			
LNAV MDA	680/24	543 (600-½)	680/60	543 (600-1¼)
CIRCLING	780-1	634 (700-1)	780-1¾ 634 (700-1¾)	900-2½ 754 (800-2½)