

NDB EMR	APP CRS	Rwy Idg	3407
385	104°	TDZE	422
		Apt Elev	422

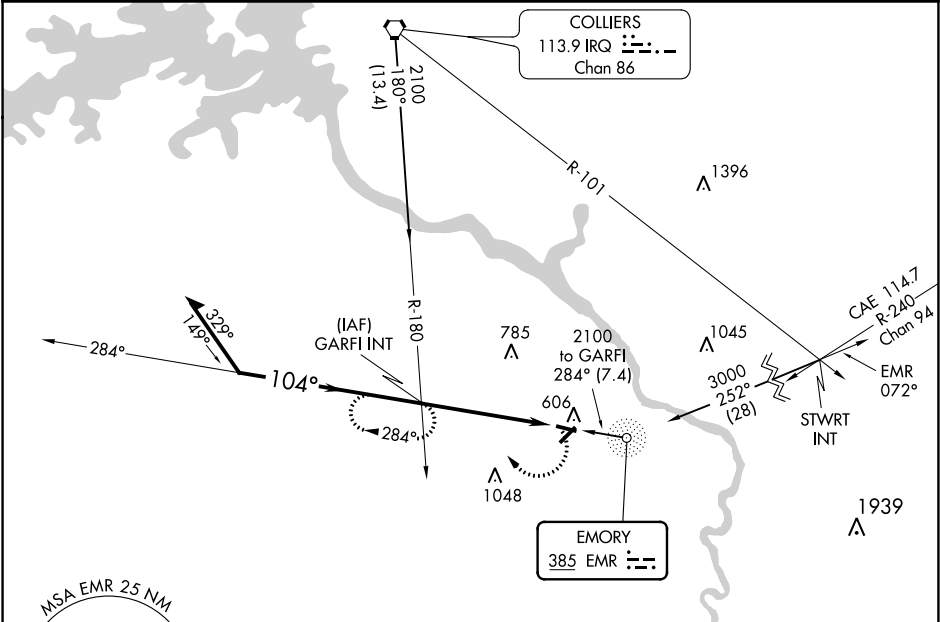
NDB RWY 11
DANIEL FIELD (DNL)

ASR

Helicopter visibility reduction below 1 SM NA. When local altimeter setting not received, use Augusta Rgnl at Bush Field altimeter setting and increase all MDA 60 feet and increase S-11 and Circling Cats C and D visibility ¼ mile. Procedure NA at night.

MISSED APPROACH: Climbing right turn to 2100 heading 335° and EMR 284° bearing to GARFI INT and hold.

ASOS 135.275	AUGUSTA APP CON ★ 126.8 270.3	UNICOM 123.05 (CTAF) 0
-----------------	----------------------------------	---------------------------



REIL Rwy 11 0

MRL Rwys 5-23 and 11-29 0

FAF to MAP 5 NM

Knots	60	90	120	150	180
Min:Sec	5:00	3:20	2:30	2:00	1:40

CATEGORY	A	B	C	D
S-11	1040-1	618 (700-1)	1040-1¾ 618 (700-1 ¾)	1040-2 618 (700-2)
CIRCLING	1040-1	618 (700-1)	1400-3	978 (1000-3)

Remain within 10 NM

GARFI INT

2100

104°

2000

2.85°

TCH 65

5 NM

2100

hdg 335°

EMR 284°

GARFI INT

VGSI and descent angles not coincident (VGSI Angle 3.50/TCH 54).

104° 5 NM from FAF

3733 x 100

4002 x 100

1.2% UP