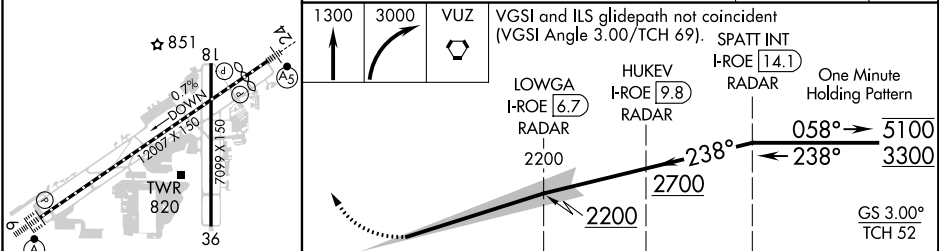
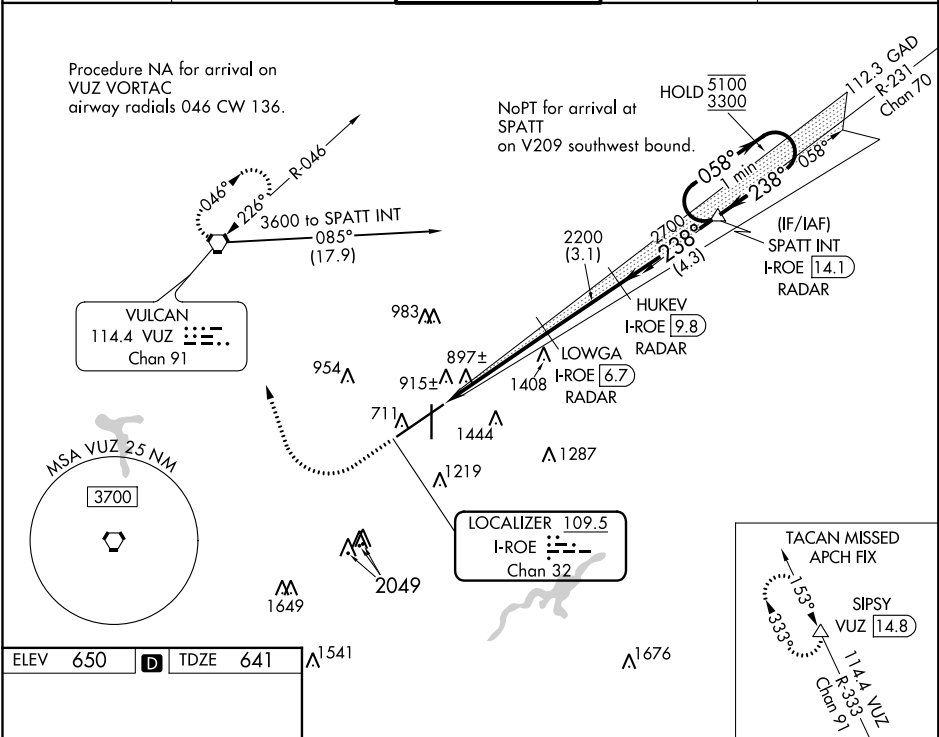


LOC/DME I-ROE	APP CRS	Rwy Idg	10801
109.5	238°	TDZE	641
Chan 32		Apt Elev	650

ILS RWY 24 (SA CAT II)
BIRMINGHAM-SHUTTLESWORTH INTL (BHM)

DME or RADAR required.	MALSR	MISSED APPROACH: Climb to 1300 then climbing right turn to 3000 direct VUZ VORTAC and hold (TACAN aircraft continue on VUZ VORTAC R-333 to SIPSY/VUZ 14.8 DME and hold NW, right turn, 153° inbound).
Rwy 24 helicopter visibility reduction below RVR 4000 NA. Reduced lighting: requires specific OPSPEC, MSPEC, or LOA approval and use of autoland or HUD to touchdown.		

ATIS 119.4 270.1	BIRMINGHAM APP CON 123.8 256.8	BIRMINGHAM TOWER 119.9 317.725	GND CON 121.7 348.6	CLNC DEL 125.675 305.2
---------------------	-----------------------------------	-----------------------------------	------------------------	---------------------------



CATEGORY	A	B	C	D
S-ILS 24	SA CAT II	RA 92/12	100	DA 741

SA CATEGORY II ILS-SPECIAL AIRCREW
& AIRCRAFT CERTIFICATION REQUIRED