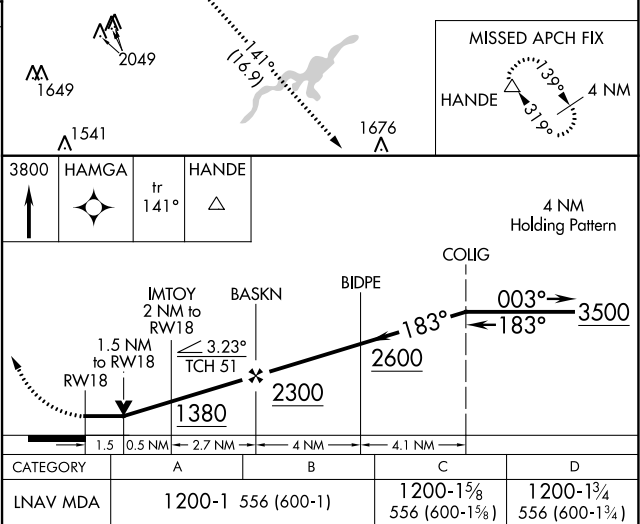
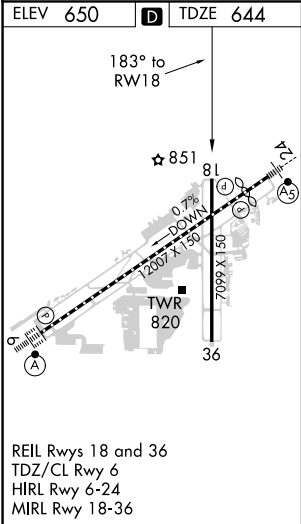
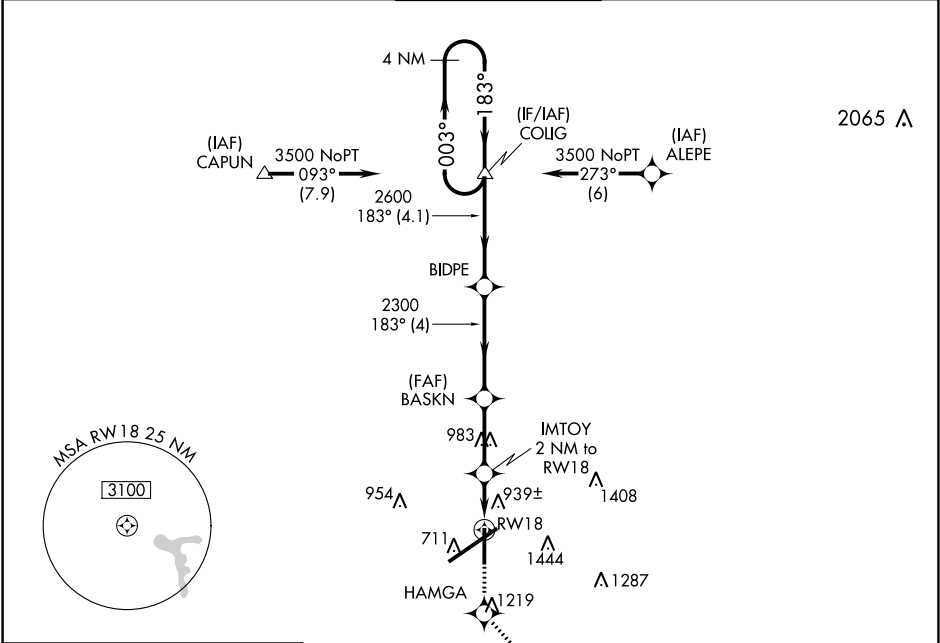


APP CRS <b>183°</b>	Rwy ldg TDZE <b>644</b>	<b>7099</b> Apt Elev <b>650</b>
------------------------	-------------------------------	---------------------------------------

**RNAV (GPS) RWY 18**  
BIRMINGHAM-SHUTTLESWORTH INTL (BHM)

<b>▼</b> Rwy 18 helicopter visibility reduction below ¾ SM NA. DME/DME RNP-0.3 NA.	MISSED APPROACH: Climb to 3800 direct HAMGA and on track 141° to HANDE and hold.
---	---

ATIS <b>119.4 270.1</b>	BIRMINGHAM APP CON <b>123.8 256.8</b>	BIRMINGHAM TOWER <b>119.9 317.725</b>	GND CON <b>121.7 348.6</b>	CLNC DEL <b>125.675 305.2</b>
----------------------------	--	--	-------------------------------	----------------------------------



SE-4, 03 DEC 2020 to 31 DEC 2020

SE-4, 03 DEC 2020 to 31 DEC 2020