

WAAS CH <b>53605</b> <b>W24A</b>	APP CRS <b>239°</b>	Rwy Idg <b>10801</b> TDZE <b>641</b> Apt Elev <b>650</b>
--	------------------------	--

## RNAV (GPS) Y RWY 24

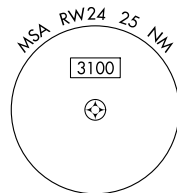
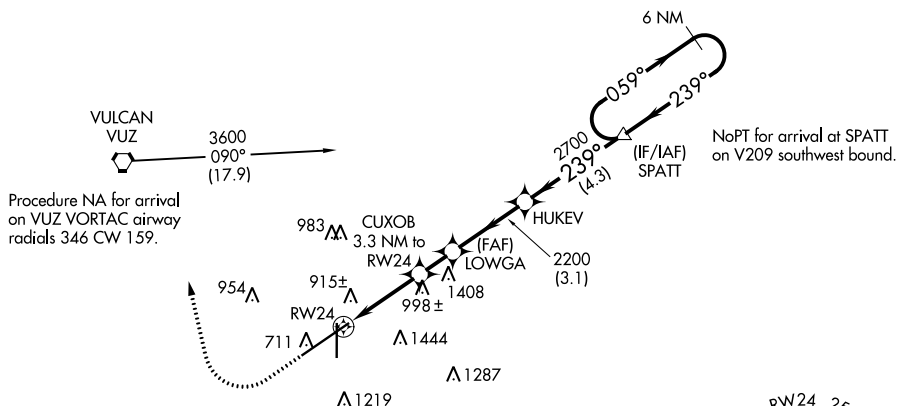
BIRMINGHAM-SHUTTLESWORTH INTL (BHM)

**⚠** For uncompensated Baro-VNAV systems, LNAV/VNAV NA below -8°C (18°F) or above 54°C (130°F). Rwy 24 helicopter visibility reduction below RVR 4000 NA. DME/DME RNP-0.3 NA. For inop ALS, increase LPV Cat E visibility to RVR 4000, LNAV/VNAV all Cots visibility to 1½ SM and LNAV Cat A/B visibility to RVR 5500, and Cat C/D/E to 1¾ SM.  
**\*\* RVR 1800 authorized with use of FD or AP or HUD to DA.**

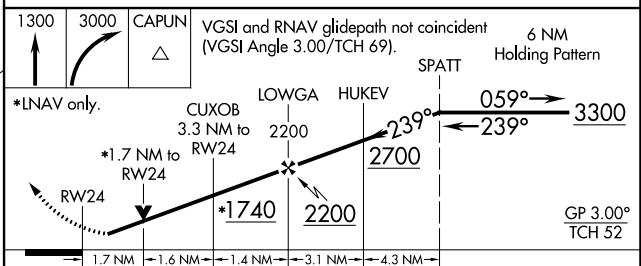
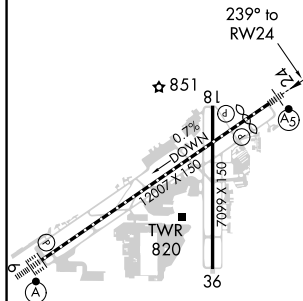
MALSR

**MISSED APPROACH:** Climb to 1300 then climbing right turn to 3000 direct CAPUN and hold.

ATIS 119.4 270.1	BIRMINGHAM APP CON 123.8 256.8	BIRMINGHAM TOWER 119.9 317.725	GND CON 121.7 348.6	CLNC DEL 125.675 305.2
---------------------	-----------------------------------	-----------------------------------	------------------------	---------------------------



ELEV	650	<b>D</b>	TDZE	641
------	-----	----------	------	-----



CATEGORY	A	B	C	D	E
LPV DA**	841/24 200 (200-½)				
RNAV/DA	1200-1½ 559 (600-1½)				
RNAV MDA	1260/40	619 (700-¾)	1260-1¾	619 (700-1¾)	