


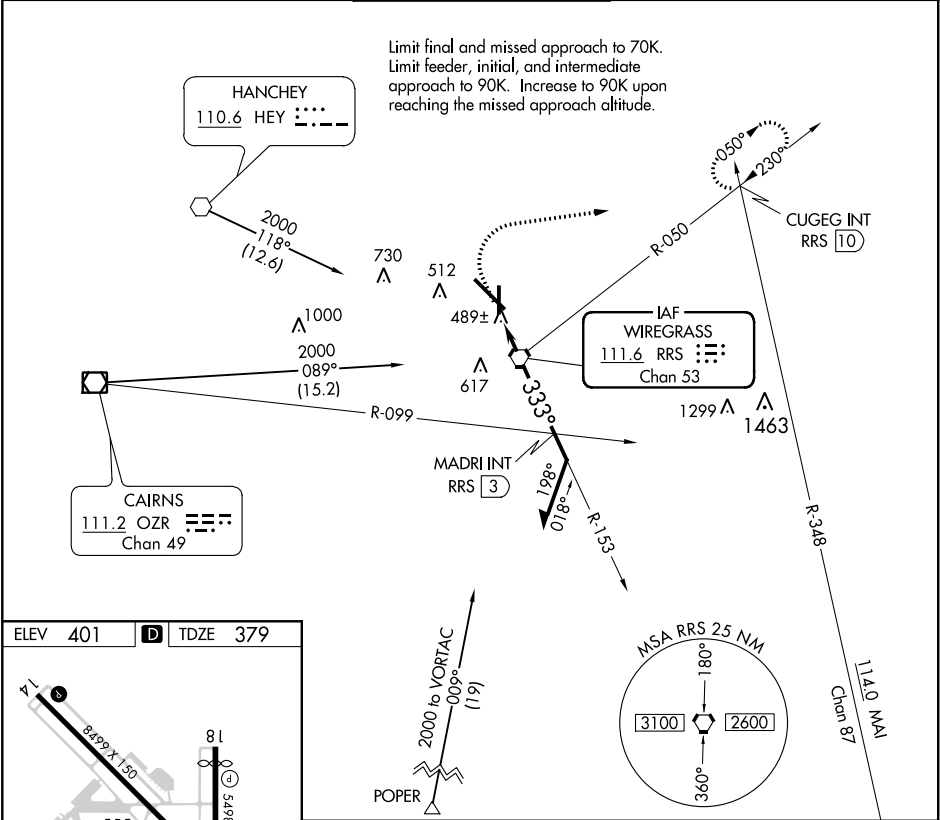
VORTAC RRS 111.6 Chan 53	APP CRS 333°	Rwy Idg TDZE Apt Elev	5000 379 401	COPTER VOR RWY 36 DOTHAN RGNL (DHN)
---------------------------------------	------------------------	-----------------------------	---	---



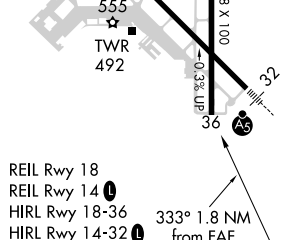
When local altimeter setting not received, use Cairns AAF altimeter setting and increase all MDA 60 feet.

MISSED APPROACH: Climb to 900 then climbing right turn to 2000 on heading 080° and RRS VORTAC R-050 to CUGEG INT/RRS 10 DME and hold.

ATIS 135.725	CAIRNS APP CON ★ 125.4 327.125	DOTHAN TOWER ★ 118.4 (CTAF) 257.6	GND CON 121.7 348.6	UNICOM 122.95
------------------------	--	---	-------------------------------	-------------------------



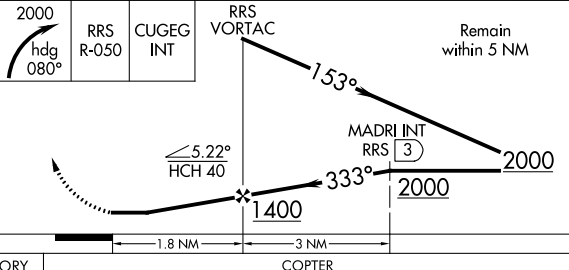
ELEV 401 TDZE 379



REIL Rwy 18
REIL Rwy 14
HIRL Rwy 18-36
HIRL Rwy 14-32

FAF to MAP 1.8 NM

Knots	45	60	75	90	105
Min:Sec	2:24	1:48	1:26	1:12	1:02

900	2000	RRS R-050	CUGEG INT	RRS VORTAC	Remain within 5 NM
↑	hdg 080°				
					
CATEGORY H-36 740-1 361 (400-1)					