

LOC I-DHN	APP CRS	Rwy Idg	8496
108.3	318°	TDZE	382
		Apt Elev	401

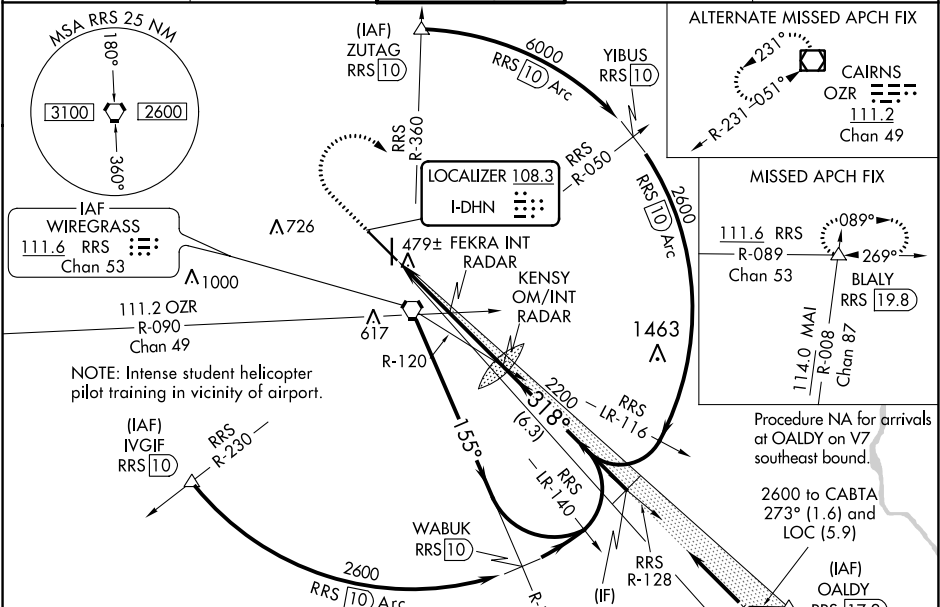
ILS or LOC RWY 32
DOTHAN RGNL (DHN)

⚠ For inoperative MALS, increase S-LOC 32 Cat C/D visibility to 2½ miles.
** RVR 1800 authorized with use of FD or AP or HUD to DA.

MALS

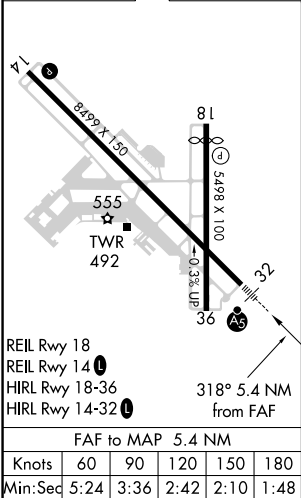
MISSED APPROACH: Climb to 1000 then climbing right turn to 3000 on hdg 130° and RRS VORTAC R-089 to BLALY INT/RRS 19.8 DME and hold.

ATIS 135.725	CAIRNS APP CON* 125.4 327.125	DOTHAN TOWER ★ 118.4 (CTAF) 0 257.6	GND CON 121.7 348.6	UNICOM 122.95
-----------------	----------------------------------	--	------------------------	------------------



DME or RADAR REQUIRED

ELEV 401	TDZE 382
----------	----------



1000	3000	BLALY	VORTAC	Teardrop left turn within 10 NM of RRS VORTAC.
RRS R-089				
*LOC only.				
FEKRA INT RADAR	1220*	2168	I-DHN 318°	2200
	2.7 NM	2.7 NM		GS 3.00° TCH 57
CATEGORY	A	B	C	D
S-ILS 32 **	582/24 200 (200-½)			
S-LOC 32	1220/24 838 (900-½)	1220/40 838 (900-¾)	1220-1 838 (900-1½)	
CIRCLING	1220-1¼ 819 (900-1¼)		1220-2 ½ 819 (900-2½)	1220-2¾ 819 (900-2¾)
FEKRA FIX MINIMUMS				
S-LOC 32	820/24 438 (500-½)		820/40 438 (500-¾)	
CIRCLING	860-1 459 (500-1)		920-1½ 519 (600-1½)	1040-2 639 (700-2)

SE-4, 03 DEC 2020 to 31 DEC 2020

SE-4, 03 DEC 2020 to 31 DEC 2020