

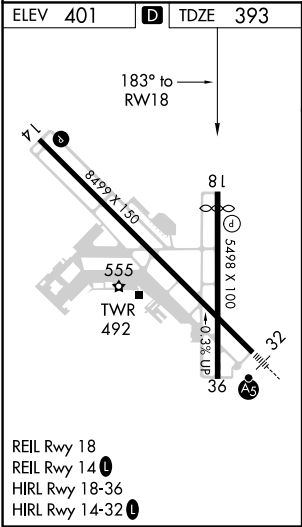
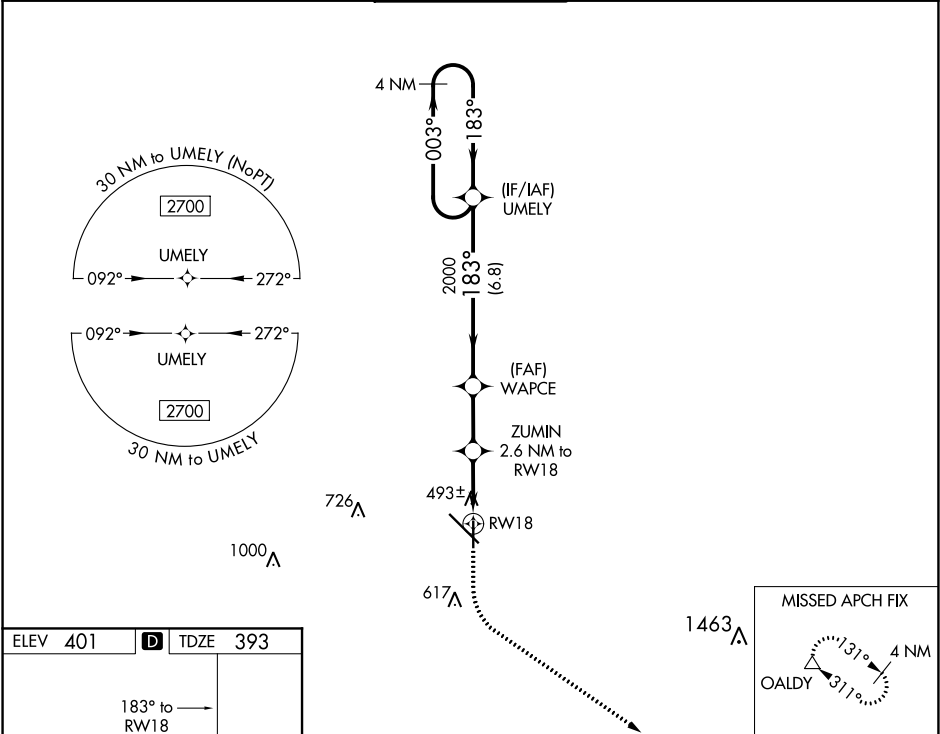
WAAS CH <b>49118</b> <b>W18A</b>	APP CRS <b>183°</b>	Rwy Idg TDZE Apt Elev	<b>5000</b> <b>393</b> <b>401</b>
--	------------------------	-----------------------------	---


RNAV (GPS) RWY 18  
DOTHAN RGNL (DHN)

**V** For uncompensated Baro-VNAV systems, LNAV/VNAV NA below -15°C (5°F) or above 41°C (105°F). DME/DME RNP-0.3 NA. Visibility reduction by helicopters NA.

MISSED APPROACH: Climb to 900 then climbing left turn to 3000 direct OALDY and hold.

ATIS <b>135.725</b>	CAIRNS APP CON ★ <b>125.4 327.125</b>	DOTHAN TOWER ★ <b>118.4 (CTAF) 0 257.6</b>	GND CON <b>121.7 348.6</b>	UNICOM <b>122.95</b>
------------------------	--	---	-------------------------------	-------------------------



900	3000	OALDY △	VGSI and RNAV glidepath not coincident (VGSI Angle 3.00/TCH 40).		4 NM Holding Pattern
*LNAV only.		ZUMIN 2.6 NM to RW18	WAPCE 2000	183°	003° → 2700 ← 183°
RW18		*1 NM to RW18	1260*	2000	GP 3.00° TCH 45
1 NM 1.6 NM		2.3 NM	6.8 NM		
CATEGORY	A	B	C	D	
LPV DA	643-¾		250 (300-¾)		
LNAV/VNAV DA	674-⅞		281 (300-⅞)		
LNAV MDA	760-1		367 (400-1)		
 CIRCLING	860-1 459 (500-1)		920-1½ 519 (600-1½)	1040-2 639 (700-2)	

SE-4, 03 DEC 2020 to 31 DEC 2020

SE-4, 03 DEC 2020 to 31 DEC 2020