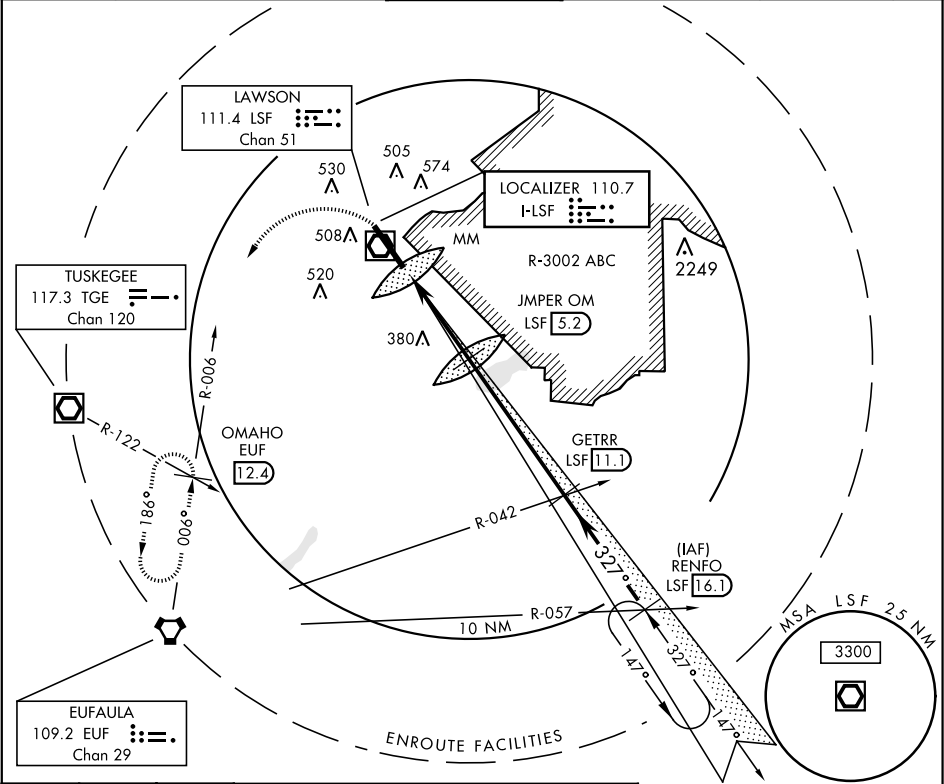


FT. BENNING (COLUMBUS), GEORGIA

ILS or LOC RWY 33

LOC I-LSF 110.7	APCH CRS 327°	Rwy ldg 9300 TDZE 226 Arpt Elev 227	AL-146 [USA]		LAWSON AAF (KLSF)	
* Circling not authorized E of Rwy 15-33. NA when tower closed.			SALSF A2	MISSED APPROACH: Climb to 1000 then climbing left turn to 2400 via EUF R-006 to OMAHO INT/EUF 12.4 DME and hold.		
ATIS ★ 134.375	ATLANTA APP CON 125.5 323.1 blw 7000 126.55 353.75 7000 and abv		LAWSON TOWER ★ 119.05 269.525	GND CON 121.7 254.25	CLNC DEL 121.7 251.15	ASR/ PAR



1000	2400	OMAHO EUF R-006	JMPER OM 5.2	GETRR EUF R-042 11.1	RENFO EUF R-057 16.1	ELEV 227	TDZE 226
↑	↑	↑	↑	↑	↑	↑	↑
3000	2200	1700	1454	327°	327°	327°	327°
GS 3.00°	TCH 54	3.8 NM	0.5	3.8 NM	3.8 NM	3.8 NM	3.8 NM
CATEGORY	A	B	C	D			
S-ILS 33	426/24	200 (200-½)	426/40	200 (200-¾)			
S-LOC 33	640/40	414 (500-¾)	640/50	414 (500-1)			
CIRCLING *	820-1	593 (600-1)	840-1 ¾	880-2			
			613 (700-1 ¾)	653 (700-2)			
LOC FAF to MAP 4.4 NM						LOC FAF to MAP 4.4 NM	
						Knots	60 90 120 150 180
						Min:Sec	4:24 2:56 2:12 1:46 1:28

FT. BENNING (COLUMBUS), GEORGIA 32°20'N-85°00'W LAWSON AAF (KLSF)

Orig B 16JUL20

ILS or LOC RWY 33

SE-4, 03 DEC 2020 to 31 DEC 2020

SE-4, 03 DEC 2020 to 31 DEC 2020