

RNAV (GPS) RWY 33

APCH CRS	Rwy Idg	9300
327°	TDZE	226
	Arpt Elev	227

AL-146 [USA]

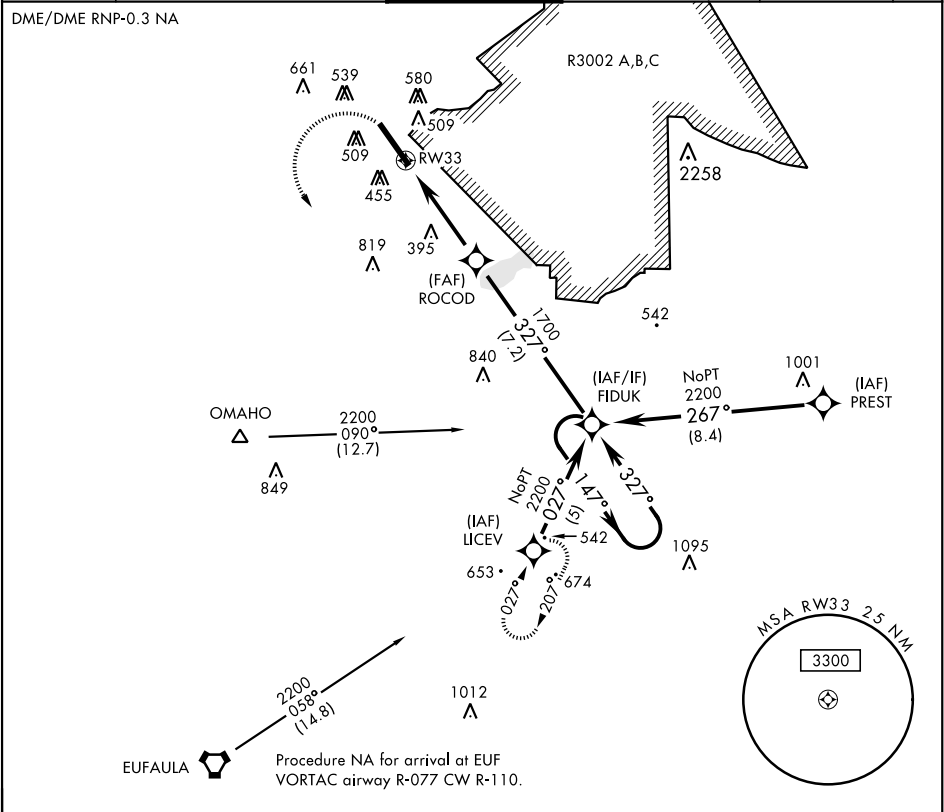
LAWSON AAF (KLSF)

▼ \* When ALS inop, increase CAT D vis to 1½ miles.  
\*\* Circling not authorized E of Rwy 15-33.

SALSF  
A2

MISSED APPROACH: Climbing left turn to 2200 direct LICEV and hold.

ATIS ★ 134.375	ATLANTA APP CON 125.5 323.1 126.55 353.75	blw 7000 7000 and abv	LAWSON TOWER ★ 119.05 269.525	GND CON 121.7 254.25	CLNC DEL 121.7 251.15	ASR/ PAR
-------------------	---	--------------------------	----------------------------------	-------------------------	--------------------------	-------------



2200 LICEV

FIDUK 147°

ROCOD 327°

1.2 NM to RW33

4.4 NM

1700

3.04° TCH 55

CATEGORY	A	B	C	D
LNAV MDA ★	660/40 434 (500-¾)	660/50 434 (500-1)	660/60 434 (500-1¼)	
CIRCLING ★★	820-1 593 (600-1)	840-1¾ 613 (700-1¾)	880-2 653 (700-2)	

ELEV 227

TDZE 226

Rwy 33 Idg 9300'

HIRL Rwy 15-33

380

330

370

327° to RW33

RNAV (GPS) RWY 33

SE-4, 03 DEC 2020 to 31 DEC 2020

SE-4, 03 DEC 2020 to 31 DEC 2020