

FT. BENNING (COLUMBUS), GEORGIA

VOR/DME RWY 15

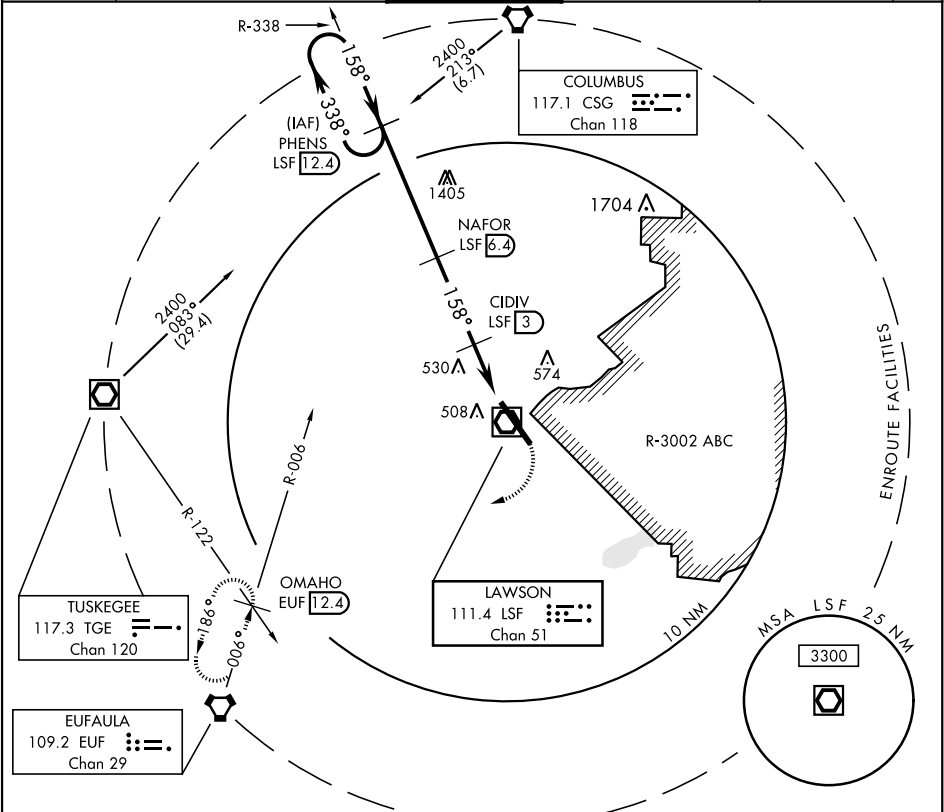
VOR/DME LSF 111.4 Chan 51	APCH CRS 158°	Rwy Idg 10,000 TDZE 226 Arpt Elev 227
---	-------------------------	--

AL-146 [USA]

LAWSON AAF (KLSF)

▼ * Circling not authorized E of Rwy 15-33.	MISSED APPROACH: Climbing right turn to 2400 via heading 240° and EUF VORTAC R-006 to OMAHO INT/EUF 12.4 DME and hold.
---	--

ATIS ★ 134.375	ATLANTA APP CON 125.5 323.1 blw 7000 126.55 353.75 7000 and abv	LAWSON TOWER ★ 119.05 269.525	GND CON 121.7 254.25	CLNC DEL 121.7 251.15	ASR/ PAR
--------------------------	---	---	--------------------------------	---------------------------------	-------------



VGSI and descent angles not coincident.				2400 hdg 240°	EUF R-006	OMAHO EUF 12.4	ELEV 227	TDZE 226
PHENS 12.4				338°	158°	2400	158° to LSF VOR/DME	380
NAFOR 6.4				158°	2400	2100	319	330
CIDIV 3				2400	2100	1000	319	330
VOR/DME				2400	2100	1000	319	330
CATEGORY				A	B	C	D	
S-15				820/50	594 (600-1)	820-1½ 594 (600-1½)	820-1¾ 594 (600-1¾)	
CIRCLING *				820-1	593 (600-1)	840-1¾ 613 (700-1¾)	880-2 653 (700-2)	

FT. BENNING (COLUMBUS), GEORGIA

32°20'N-85°00'W

LAWSON AAF (KLSF)

Amtd 9B 16JUL20

VOR/DME RWY 15

SE-4, 03 DEC 2020 to 31 DEC 2020

SE-4, 03 DEC 2020 to 31 DEC 2020