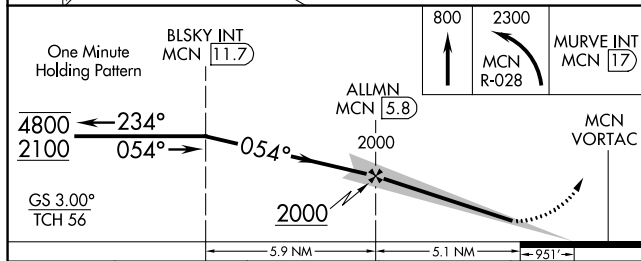
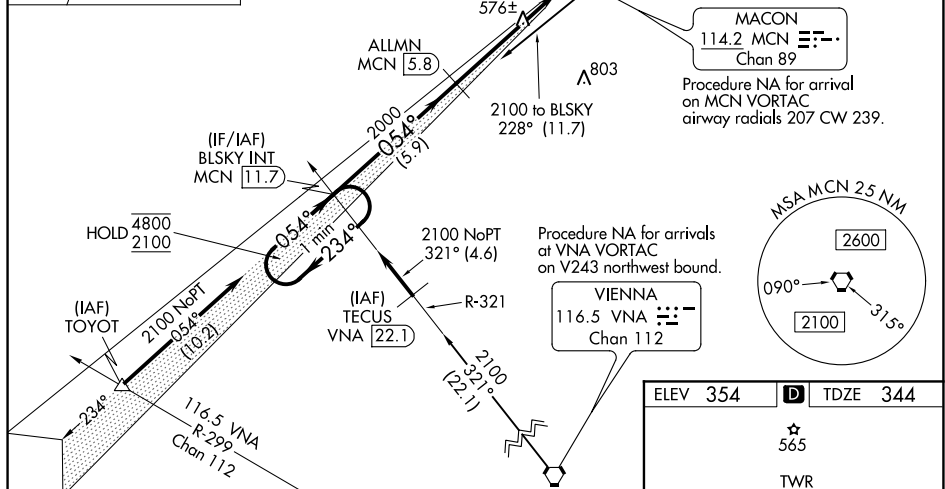


ILS RWY 5 (SA CAT I & II)
MIDDLE GEORGIA RGNL (MCN)

MISSED APPROACH:
Climb to 800 then climbing
left turn to 2300 on MCN
VORTAC R-028 to MURVE
INT/MCN 17 DME and hold.

MALSR



CATEGORY	A	B	C	D
S-ILS 5	SA CAT I	RA 216/14	150 DA	494
S-ILS 5	SA CAT II	RA 151/12	100 DA	444

SA CATEGORY I & II ILS - SPECIAL AIRCREW
& AIRCRAFT CERTIFICATION REQUIRED

