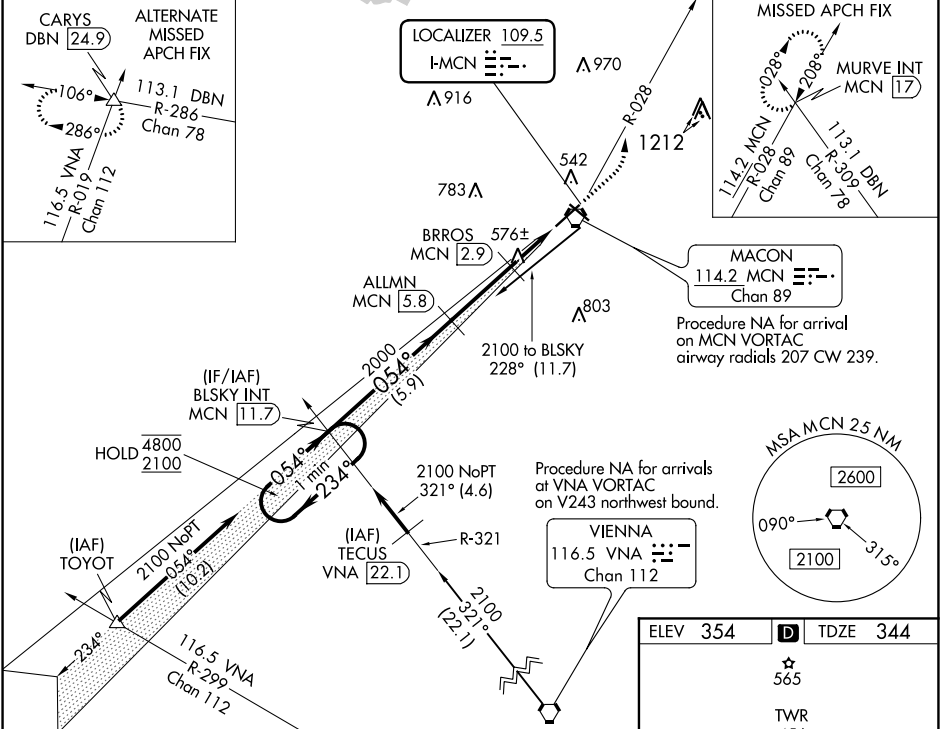


LOC I-MCN <b>109.5</b>	APP CRS <b>054°</b>	Rwy Idg TDZE Apt Elev <b>6221</b> <b>344</b> <b>354</b>
---------------------------	------------------------	--

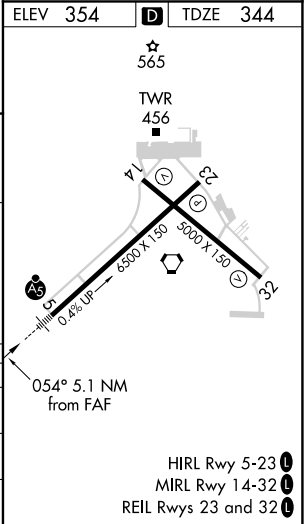
ILS or LOC RWY 5  
MIDDLE GEORGIA RGNL (MCN)

DME required.	MALS	MISSED APPROACH: Climb to 800 then climbing left turn to 2300 on MCN VORTAC R-028 to MURVE INT/MCN 17 DME and hold.
<b>T</b> DME from MCN VORTAC. Simultaneous reception of I-MCN and MCN DME required. For inop ALS, increase S-ILS 5 Cat E visibility to RVR 4000 and S-LOC 5 Cats C/D/E visibility to 1½ SM. **RVR 1800 authorized with use of FD or AP or HUD to DA.		

ATIS <b>120.775</b>	ATLANTA APP CON ★ <b>124.2 279.6</b>	MACON TOWER ★ <b>128.2 (CTAF) 0 257.8</b>	GND CON <b>121.65</b>	UNICOM <b>122.95</b>
------------------------	---	--	--------------------------	-------------------------



One Minute Holding Pattern		*LOC only.		MURVE INT MCN 17	
4800 ← 234°		800		2300	
2100 → 054°		↑		MCN R-028	
GS 3.00° TCH 56		ALLMN MCN 5.8		MCN VORTAC	
BLSKY INT MCN 11.7		BRROS MCN 2.9		MCN 0.8	
2000		*MCN 2.2		MCN 0.8	
5.9 NM		2.9 NM		0.8 NM	
CATEGORY		A		B	
S-ILS 5**		544/24		200 (200-½)	
S-LOC 5		840/24		496 (500-½)	
CIRCLING		900-1		546 (600-1)	
		920-1½		1120-2½	
		566 (600-1½)		766 (800-2½)	
				1180-3	
				826 (900-3)	



SE-4, 03 DEC 2020 to 31 DEC 2020

SE-4, 03 DEC 2020 to 31 DEC 2020