

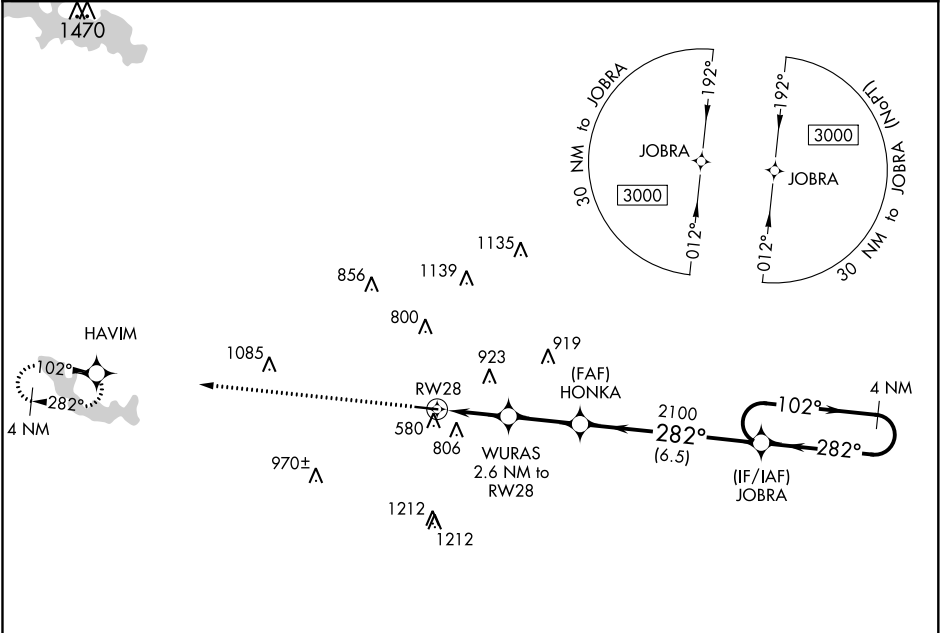
WAAS CH 86421 W28A	APP CRS 282°	Rwy Idg 4184 TDZE 430 Apt Elev 437
--	------------------------	---

RNAV (GPS) RWY 28

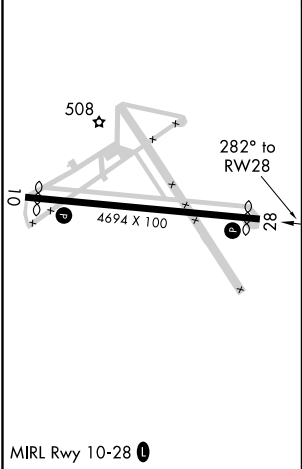
MACON DOWNTOWN (MAC)

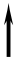

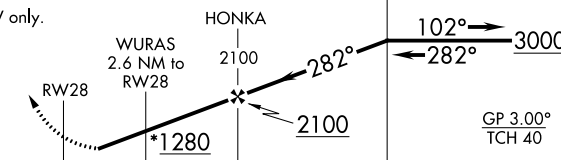

<div><div>⚠</div><div>NA</div></div> <div>Baro-VNAV NA. Rwy 28 helicopter visibility reduction below ¾ SM NA. DME/DME RNP-0.3 NA. Use Middle Georgia altimeter setting, when not received, use Robbins AFB altimeter setting and increase LPV DA to 726 feet, increase LNAV/VNAV DA to 1063 feet and increase all MDA 20 feet.</div>	MISSED APPROACH: Climb to 3000 direct HAVIM and hold.
--	---

MCN ASOS 120.775	ATLANTA APP CON ★ 124.2 279.6	UNICOM 123.0 (CTAF) 0
----------------------------	---	---------------------------------



ELEV 437	D	TDZE 430
-----------------	----------	-----------------



3000	HAVIM	VGSI and RNAV glidepath not coincident (VGSI Angle 3.00°/TCH 23).				4 NM
						Holding Pattern
*LNAV only.						
						
2.6 NM		2.6 NM		6.5 NM		
CATEGORY	A	B	C	D		
LPV DA	712-1		282 (300-1)			
LNAV/ VNAV	DA	1049-2½		619 (700-2½)		
LNAV MDA	920-1	490 (500-1)		920-1⅓	490 (500-1⅓)	
 CIRCLING	1200-1	763 (800-1)		1320-2¾ 883 (900-2¾)	1480-3 1043 (1100-3)	