


LOC/DME I-RUJ <b>108.5</b> Chan <b>22</b>	APP CRS <b>320°</b>	Rwy Idg <b>9618</b> TDZE <b>25</b> Apt Elev <b>26</b>
---	------------------------	---

ILS or LOC RWY 32  
MOBILE DOWNTOWN (BFM)

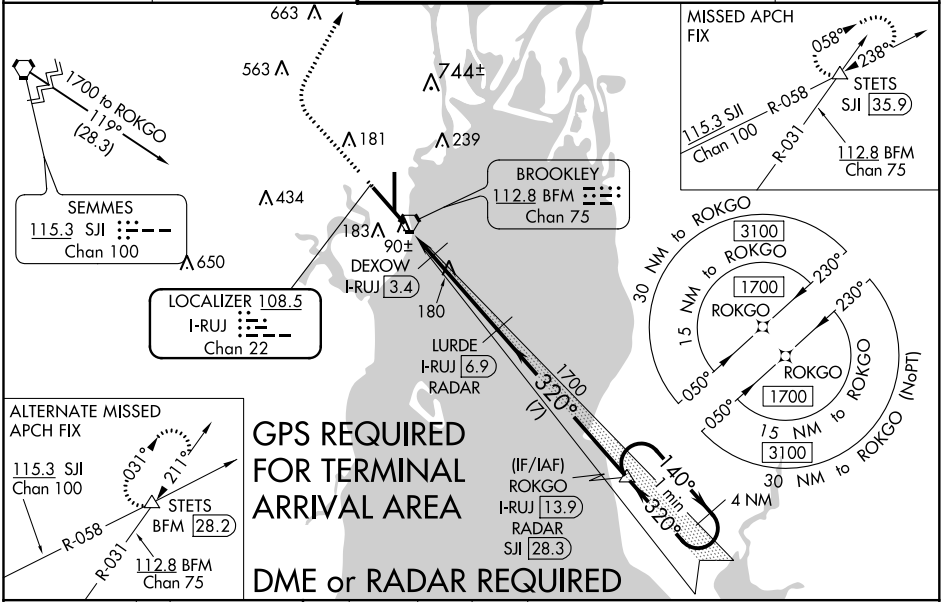
**⚠** DME or radar required. When local altimeter setting not received, use Mobile Rgnl altimeter setting and increase all DA 50 feet and all MDA 60 feet, increase S-LOC 32 Cat C/D visibility ½ mile and Circling Cat C visibility ¼ mile, increase DEXOW fix minimums S-LOC 32 Cats C/D visibility ½ mile. For inop MALSR increase S-ILS 32 all Cats visibility to RVR 4000. VDP NA when using Mobile Rgnl altimeter setting.

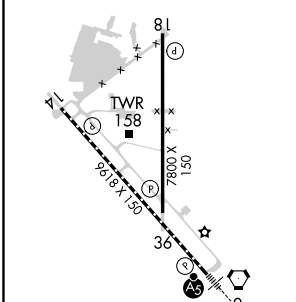
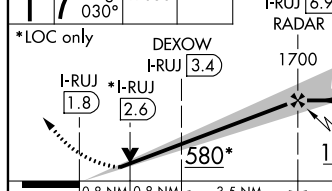
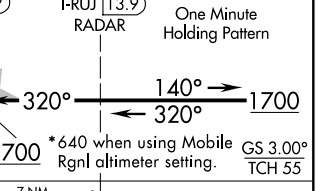
**MALSR**



**MISSED APPROACH:** Climb to 800 then climbing right turn to 2000 on heading 030° and SJI R-058 to STETS INT/SJI 35.9 DME and hold.

ATIS <b>135.575</b>	MOBILE APP CON ★ <b>118.5 269.3</b>	DOWNTOWN TOWER ★ <b>118.8 (CTAF) 251.1</b>	GND CON <b>121.7 239.3</b>	UNICOM <b>122.95</b>
------------------------	--	---	-------------------------------	-------------------------



ELEV 26	TDZE 25	800	2000	STETS	VGSI and ILS glidepath not coincident (VGSI Angle 3.00/TCH 71).
					
REIL Rwy 14 MIRL Rwy 18-36 HIRL Rwy 14-32 TDZ/CL Rwy 32 FAF to MAP 5.1 NM		*LOC only			
Knots 60 90 120 150 180 Min:Sec 5:06 3:24 2:33 2:02 1:42		CATEGORY A B C D			
		S-ILS 32 225/18 200 (200-½)			
		S-LOC 32 580/24 555 (600-½) 580-1¼ 555 (600-1¼)			
		CIRCLING 680-1 654 (700-1) 680-1¼ 1100-3 654 (700-1¼) 1074 (1100-3)			
		DEXOW FIX MINIMUMS			
		S-LOC 32 340/24 315 (400-½) 340/26 315 (400-½)			
		CIRCLING 680-1 654 (700-1) 680-1¼ 1100-3 654 (700-1¼) 1074 (1100-3)			

SE-4, 03 DEC 2020 to 31 DEC 2020

SE-4, 03 DEC 2020 to 31 DEC 2020