

WAAS CH <b>70304</b> <b>W32A</b>	APP CRS <b>320°</b>	Rwy Idg TDZE Apt Elev	<b>9618</b> <b>25</b> <b>26</b>
--	------------------------	-----------------------------	---------------------------------------

RNAV (GPS) RWY 32

MOBILE DOWNTOWN (BFM)

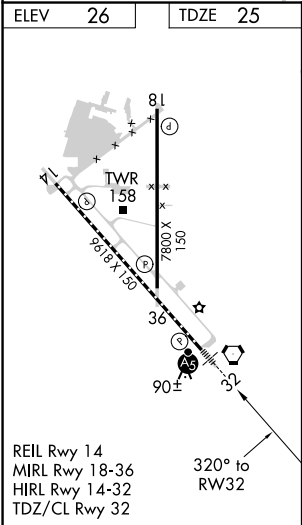
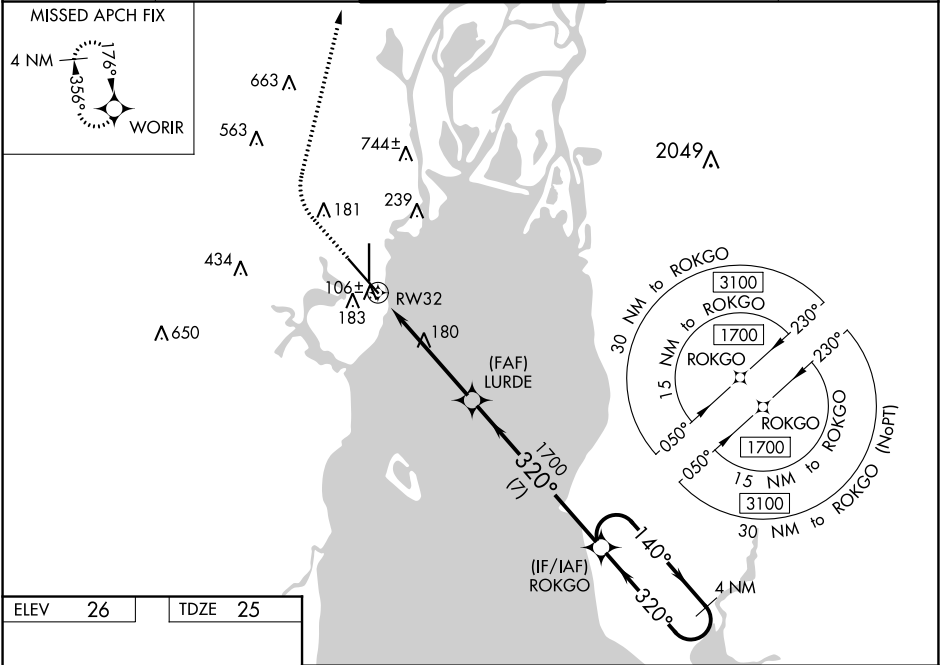
⚠

DME/DME RNP-0.3 NA. When local altimeter setting not received, use Mobile Rgnl altimeter setting and increase all DA 50 feet and MDA 60 feet and increase LNAV Cat C/D visibility to RVR 5500, and increase Circling Cat C visibility ¼ mile. For uncompensated Baro-VNAV systems, LNAV/VNAV NA below 13°C (56°F) or above 54°C (130°F). Baro-VNAV and VDP NA when using Mobile Rgnl altimeter setting.

MALS

MISSED APPROACH: Climb to 800 then climbing right turn to 2000 direct WORIR and hold.

ATIS <b>135.575</b>	MOBILE APP CON ★ <b>118.5 269.3</b>	DOWNTOWN TOWER ★ <b>118.8 (CTAF) 251.1</b>	GND CON <b>121.7 239.3</b>	UNICOM <b>122.95</b>
------------------------	--	---	-------------------------------	-------------------------



800

2000

WORIR

VGSI and RNAV glidepath not coincident (VGSI Angle 3.00/TCH 71).

\*LNAV only.

CATEGORY	A	B	C	D
LPV DA	225/18		200 (200-½)	
LNAV/VNAV DA	283/24		258 (300-½)	
LNAV MDA	480/24	455 (500-½)	480/50	455 (500-1)
CIRCLING	680-1	654 (700-1)	680-1¾ 654 (700-1¾)	1100-3 1074 (1100-3)