
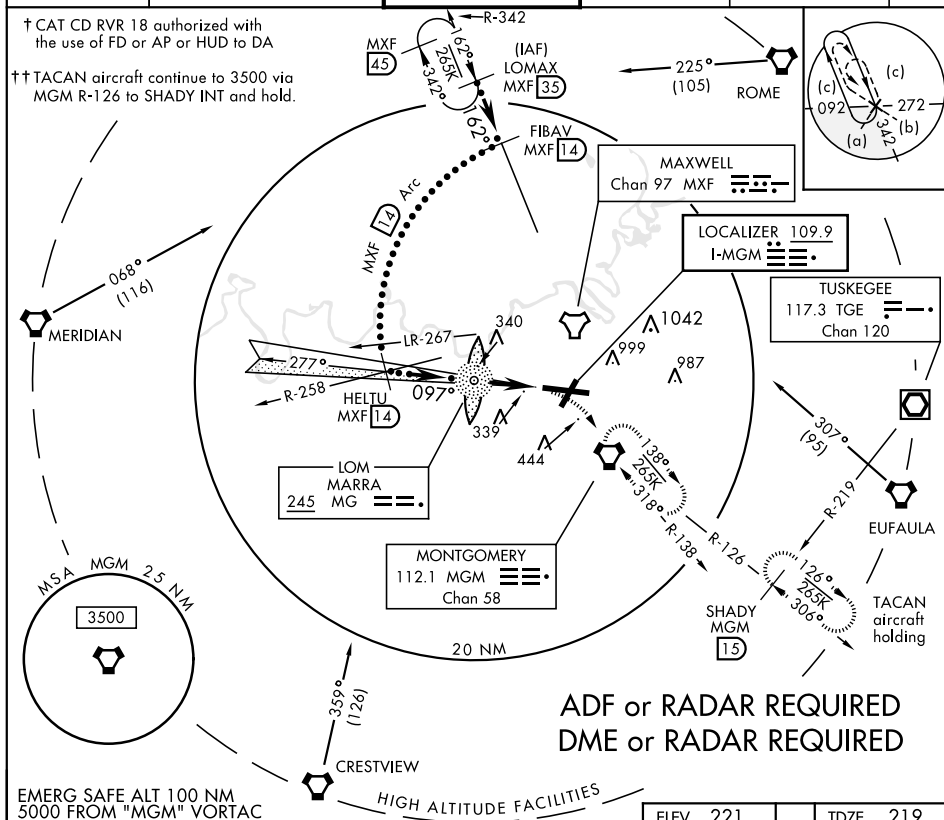


HI-ILS or LOC RWY 10

LOC I-MGM 109.9	APCH CRS 097°	Rwy Idg TDZE Arpt Elev 9020 219 221	JAL-272 [USAF]	HI-ILS or LOC RWY 10		
MONTGOMERY REGIONAL (DANNELLY FIELD) (KMG)						
V * When ALS inop, increase vis all CATs to RVR 40. ** When ALS inop, incr CAT C vis to RVR 50, CAT DE RVR 60. A *** Circling not authorized for CAT E N of Rwy 10-28.			MALSR 	↑↑ MISSED APPROACH: Climb to 700 then climbing right turn to 3000 direct MGM VORTAC and hold, continue climb-in-hold to 3000.		
ATIS ★ 120.675	MONTGOMERY APP CON 124.0 363.025	MONTGOMERY TOWER ★ 119.7(CTAF) 0360.85	GND CON 121.7 348.6	CLNC DEL 118.3 270.3	ASR ASOS	

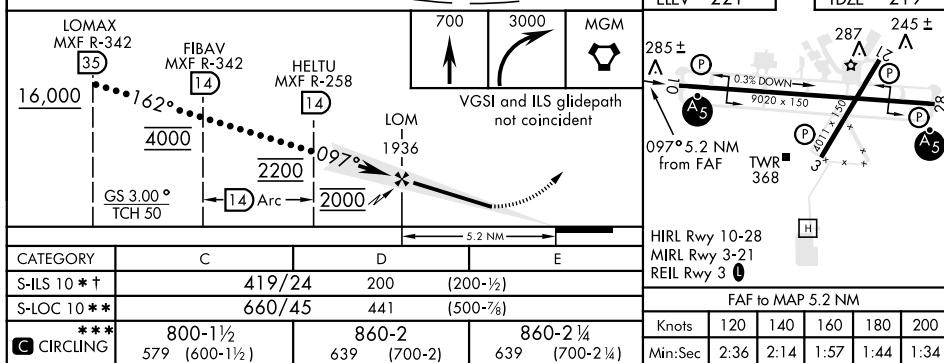
† CAT CD RVR 18 authorized with the use of FD or AP or HUD to DA

††TACAN aircraft continue to 3500 via
MGM R-126 to SHADY INT and hold



ADF or RADAR REQUIRED
DME or RADAR REQUIRED

EMERG SAFE ALT 100 NM
5000 FROM "MGM" VORTAC



MONTGOMERY, ALABAMA

32°18'N-86°24'W

MONTGOMERY REGIONAL (DANNELLY FIELD) (KMGM)

Amdt 9C 07JAN15

HI-ILS or LOC RWY 10

SE-4, 03 DEC 2020 to 31 DEC 2020

SE-4, 03 DEC 2020 to 31 DEC 2020