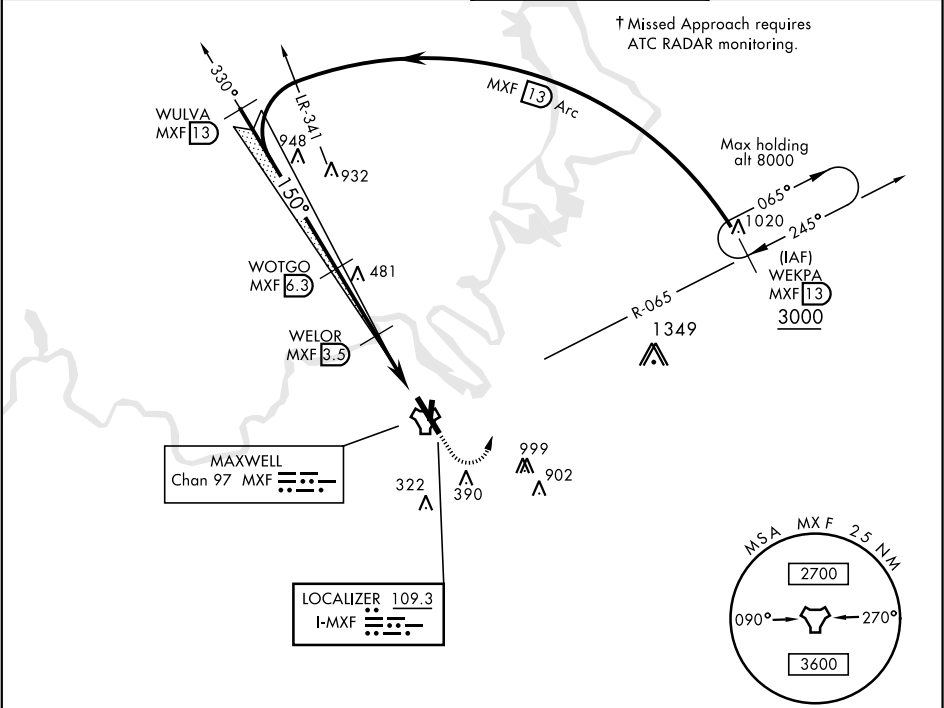
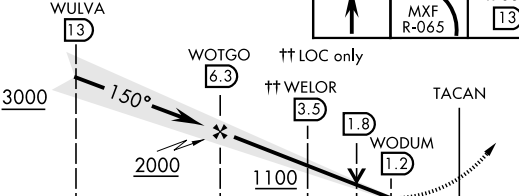



ILS or LOC/DME RWY 15

LOC I-MXF 109.3	APCH CRS 150°	Rwy ldg TDZE 171 Arpt Elev 171	AL-274 [USAF]	MAXWELL AFB (KMXF)
* When ALS inop, increase RVR to 40 and vis to ¾ mile. ** When ALS inop, increase CAT AB RVR to 55 and vis to 1 mile, CAT CDE RVR to 60 and vis to 1½ mile. *** Circling not authorized E of Rwy 15-33.			ALSF-1 	† MISSED APPROACH: Climb to 1000, then climbing left turn to 3000 to intercept MXF TACAN R-065 outbound to 13 DME (WEKPA) and hold.
ATIS ★ 134.7 269.9	MONTGOMERY APP CON 121.2 269.05	MAXWELL TOWER ★ 118.15 253.5	GND CON 127.15 289.4	



EMERG SAFE ALT 100 NM 5000

VGSI and descent angle not coincident					1000	3000	WEKPA R-065	ELEV 171	TDZE 171
					1000	3000	WEKPA R-065	ELEV 171	TDZE 171
CATEGORY	A	B	C	D	E				
S-ILS 15 *	371/24 200 (200-½)								
S-LOC 15 **	560/24	389 (400-½)	560/35	389 (400-¾)					
CIRCLING ***	680-1	509 (600-1)	740-1½ 569 (600-1½)	940-2½ 769 (800-2½)	NA	HIRL Rwy 15-33			

ILS or LOC/DME RWY 15

SE-4, 03 DEC 2020 to 31 DEC 2020

SE-4, 03 DEC 2020 to 31 DEC 2020