

LOC I-MSL 109.7	APP CRS 297°	Rwy Idg 6694
	TDZE 551	
	Apt Elev 551	

ILS Y or LOC Y RWY 30
NORTHWEST ALABAMA RGNL (MSL)

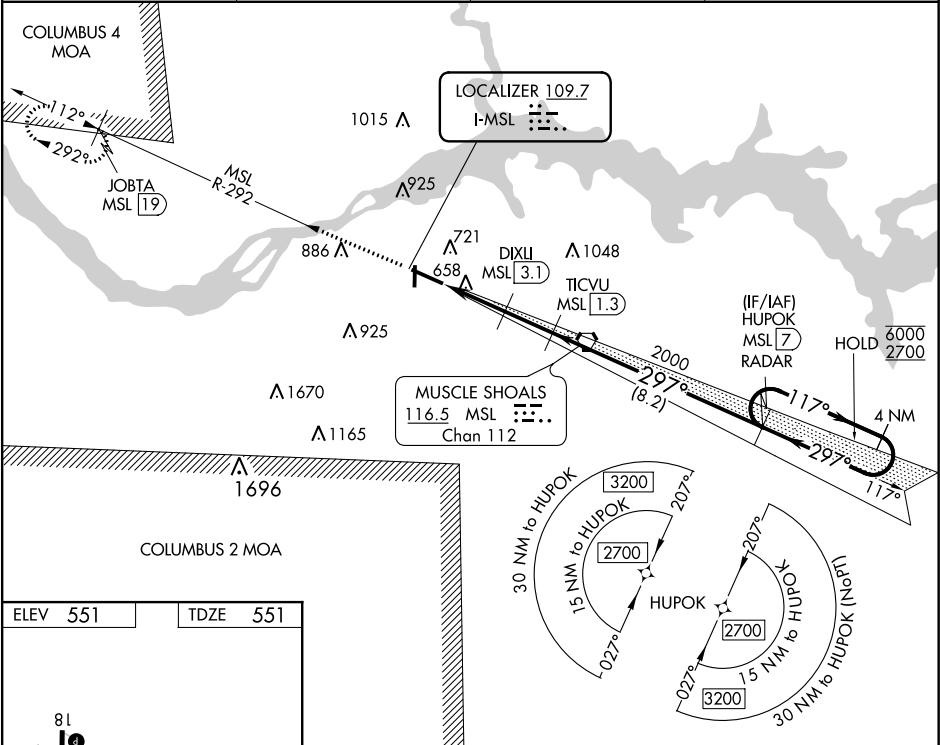
RNAV 1-GPS or RADAR required for procedure entry. DME required.

When local altimeter setting not received, use Decatur altimeter setting: Increase DA to 833 feet and all MDA 100 feet; Increase S-LOC 30 Cat C, D visibility $\frac{3}{8}$ SM and Circling Cat C, D visibility $\frac{1}{2}$ SM. DME from MSL VORTAC. Simultaneous reception of I-MSL and MSL DME required. For inop ALS increase S-LOC 30 Cats C/D visibility to 1 SM. For inop ALS when using Decatur altimeter setting, increase S-ILS 30 all Cats visibility to $\frac{3}{8}$ SM, and increase S-LOC 30 Cats C/D to $1\frac{3}{8}$ SM.

MALSR

MISSED APPROACH: Climb to 3000 on MSL VORTAC R-292 to JOBTA/MSL 19 DME and hold.

ASOS 119.425	MEMPHIS CENTER 120.8 307.0	GCO 121.725	UNICOM 123.05 (CTAF) 0
------------------------	--------------------------------------	-----------------------	----------------------------------



ELEV 551 TDZE 551

REIL Rwy 12 0

MIRL Rwy 18-36 0

HIRL Rwy 12-30 0

81

612

4000 X 100

36

6694 X 150

297° 4.4 NM from FAF

3000 ↑	MSL R-292	JOBTA MSL 19	4 NM Holding Pattern	
*LOC only.	DIXLI MSL 3.1	TICVU MSL 1.3	HUPOK MSL 7	
MSL 5.6	2000	2000	117° → 6000 2700	297°
297°	2000	2000	GS 3.00° TCH 59	
2.5	1.9 NM	8.2 NM		
CATEGORY	A	B	C	D
S-ILS 30	751-½		200 (200-½)	
S-LOC 30	920-½	369 (400-½)	920-⅝	369 (400-⅝)
CIRCLING	1040-1	489 (500-1)	1280-2 729 (800-2)	1280-2¼ 729 (800-2¼)