

WAAS CH 56435 W18A	APP CRS 184°	Rwy Idg TDZE Apt Elev	4000 547 551
--	------------------------	-----------------------------	---

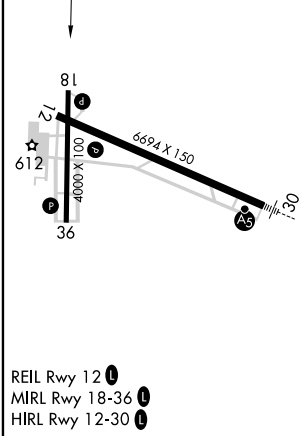
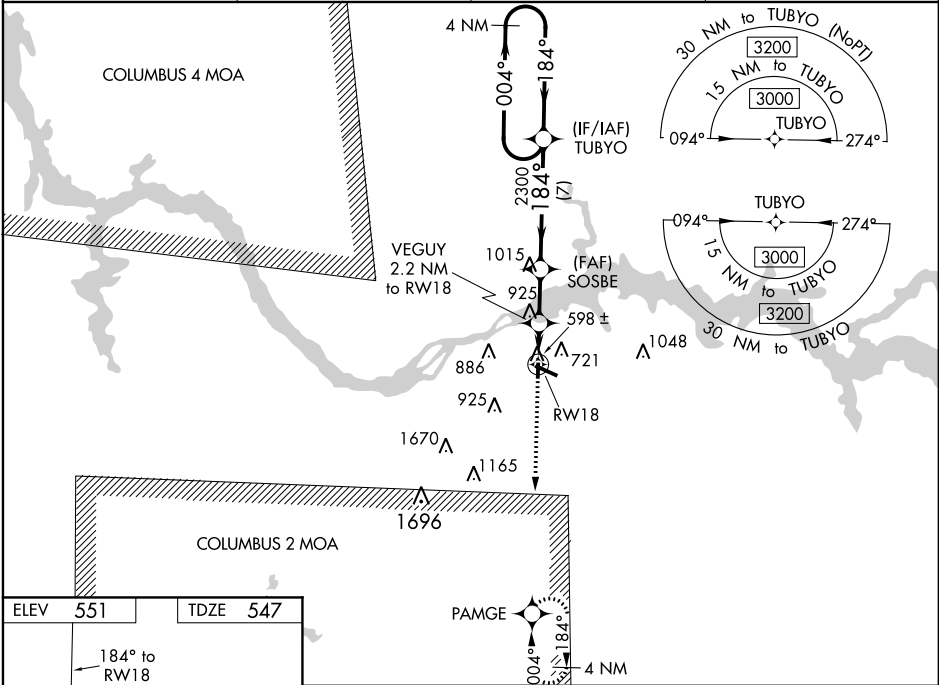
RNAV (GPS) RWY 18
NORTHWEST ALABAMA RGNL (MSL)

RNP APCH.

⚠ Baro-VNAV NA when using Decatur altimeter setting. For uncompensated Baro-VNAV systems, LNAV/VNAV NA below -4°C (25°F) or above 54°C (130°F). Rwy 18 helicopter visibility reduction below 3/4 SM NA. When local altimeter setting not received, use Decatur altimeter setting and increase LPV DA to 880, LNAV/VNAV DA to 1065 and all MDA 100 feet, increase LNAV Cat C visibility 1/4 SM, increase Circling Cat C visibility 1/2 SM.

MISSED APPROACH:
Climb to 3000 direct PAMGE and hold.

ASOS 119.425	MEMPHIS CENTER 120.8 307.0	GCO 121.725	UNICOM 123.05 (CTAF) 0
------------------------	--------------------------------------	-----------------------	----------------------------------



3000	PAMGE	VGSI and RNAV glidepath not coincident (VGSI Angle 3.00/TCH 35).	4 NM	TUBYO	Holding Pattern
*LNAV only.	VEGUY	2.2 NM to RW18	2300	SOSBE	3000
RW18	1320	2300	7 NM	GP 3.15°	TCH 57
2.2 NM	2.9 NM	7 NM			
CATEGORY	A	B	C	D	
LPV DA	797-1	250 (300-1)		NA	
LNAV/VNAV DA	982-1 3/8	435 (500-1 3/8)		NA	
LNAV MDA	960-1	413 (500-1)	960-1 1/4	413 (500-1 1/4)	NA
CIRCLING	1040-1	489 (500-1)	1280-2	729 (800-2)	NA