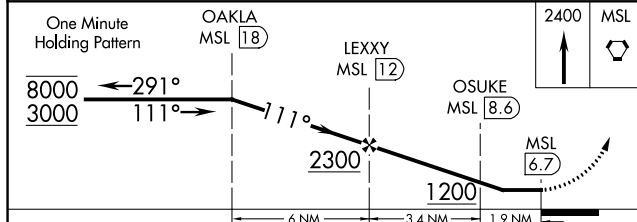
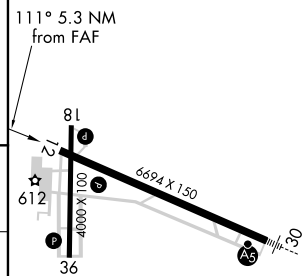
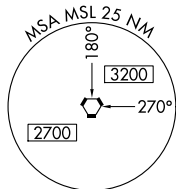
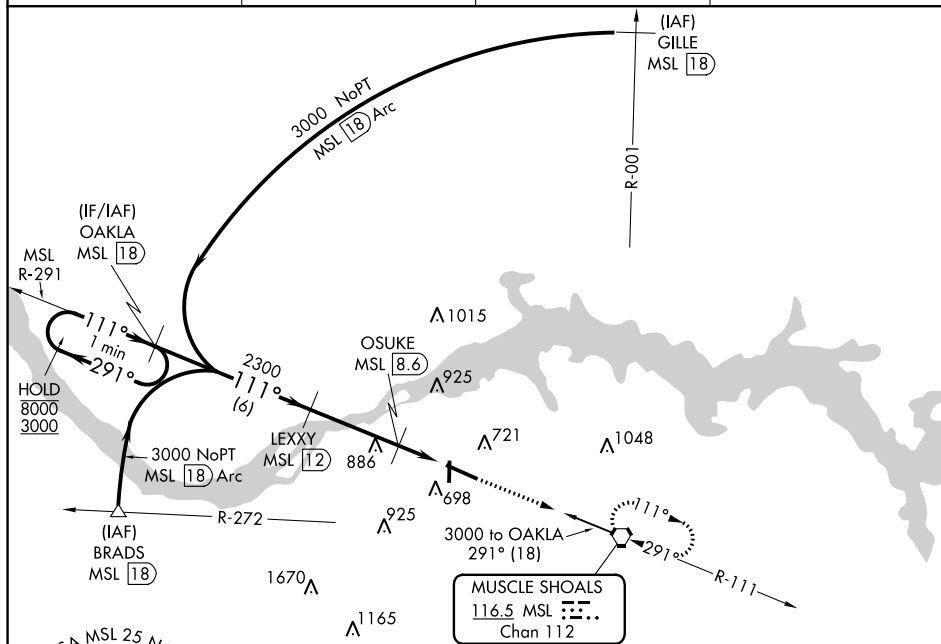


VOR RWY 12
NORTHWEST ALABAMA RGNL (MSL)

TANA

MISSED APPROACH: Climb to 2400 direct
MSL VORTAC and hold.

UNICOM
123.05 (CTAF) **L**

CATEGORY	A	B	C	D
S-12	960-1 416 (500-1)		960-1¼ 416 (500-1¼)	
C CIRCLING	1040-1 489 (500-1)		1280-2 729 (800-2)	1280-2¼ 729 (800-2¼)

REIL Rwy 12 **L**
MIRL Rwy 18-36 **L**
HIRL Rwy 12-30 **L**

VOR RWY 12

SE-4, 03 DEC 2020 to 31 DEC 2020