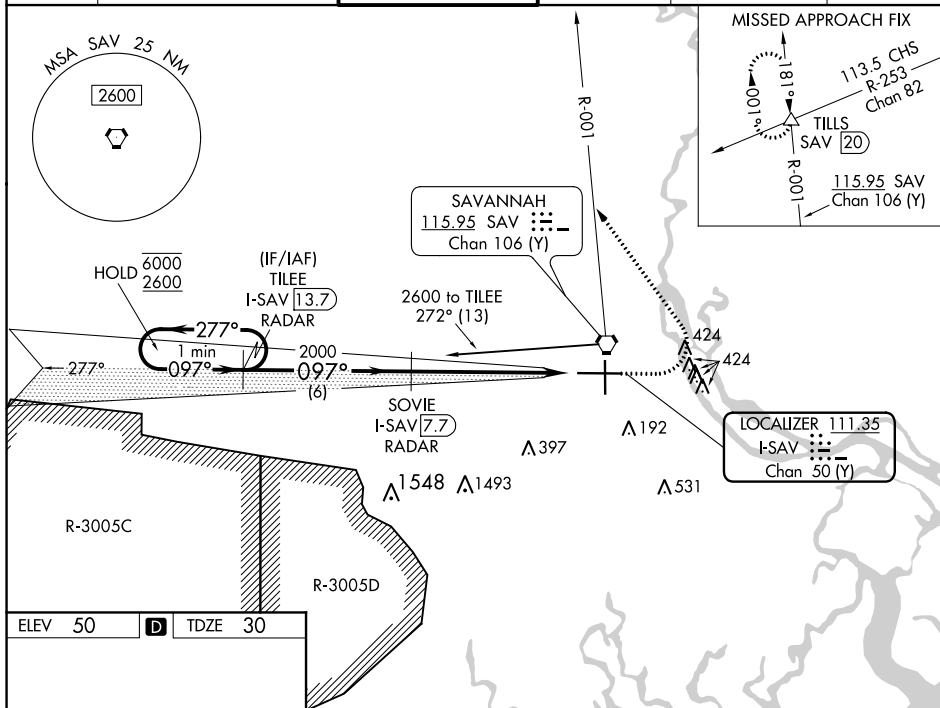


ILS RWY 10 (SA CAT I & II)
SAVANNAH/HILTON HEAD INTL (SAV)

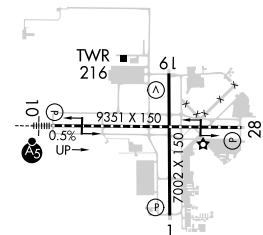
MISSED APPROACH: Climb to 800 then climbing left turn to 4000 on heading 330° and SAV VORTAC R-001 to TILLS INT/SAV 20 DME and hold.

SA CAT I: Requires specific OPSPEC, MSPEC, or LOA approval and use of HUD to DH. **SA CAT II:** Reduced lighting: Requires specific OPSPEC, MSPEC, or LOA approval and use of autoland or HUD to touchdown. Procedure NA when tower closed.

| | | | | | |
|--------|-------------------|---------------------|-------------|----------------|--------|
| ATIS | SAVANNAH APP CON★ | SAVANNAH TOWER★ | GND CON | CLNC DEL | UNICOM |
| 123.75 | 125.3 371.875 | 119.1(CTAF) 0 257.8 | 121.9 348.6 | 119.55 291.775 | 122.95 |



| | | | | |
|------|----|----------|------|----|
| ELEV | 50 | D | TDZE | 30 |
|------|----|----------|------|----|



TDZ/CL Rwy 10
REIL Rwys 19 and 28 **L**
HIRL Rwys 1-19 and 10-28 **L**

One Minute Holding Pattern

TILEE I-SAV 13.7 RADAR

SOVIE I-SAV 7.7 RADAR

800

4000

hdg 330°

SAV R-001

TILS \triangle

6000 $\leftarrow 277^\circ$

2600 $\rightarrow 097^\circ$

2000

097°

2000

VGS I and ILS glidepath not coincident (VGS Angle 3.00/TCH 69°).

GS 3.00°

TCH 50

6 NM

6 NM

890'

| CATEGORY | A | B | C | D |
|----------|-----------|-----------|-----|--------|
| S-ILS 10 | SA CAT I | RA 162/14 | 150 | DA 180 |
| S-ILS 10 | SA CAT II | RA 116/12 | 100 | DA 130 |

SA CATEGORY I & II ILS - SPECIAL AIRCREW
& AIRCRAFT CERTIFICATION REQUIRED