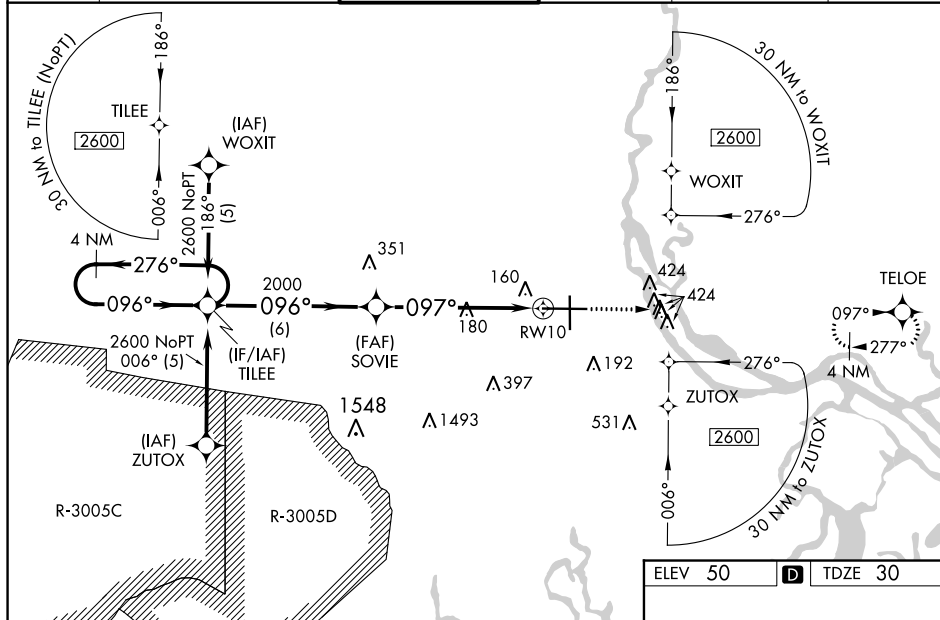


RNAV (GPS) RWY 10
SAVANNAH/HILTON HEAD INTL (SAV)

MISSED APPROACH:
Climb to 2500 direct
TELOE and hold.

UNICOM
122.95

4 NM Holding Pattern

2600

276°

096°

GP 3.00° TCH 50

TILEE

SOVIE

2000

096°

097°

2000

*1.1 NM to RW10

RW10

2500

TELOE

*LNAV only.

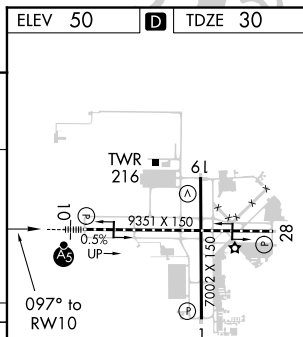
6 NM

4.9 NM

1.1 NM

VGSI and RNAV glidepath not coincident (VGSI Angle 3.00°/TCH 69).

CATEGORY	A	B	C	D
LPV DA **	230/24 200 (200-½)			
RNAV/ VNAV DA	504/60 474 (500-1¼)			
RNAV MDA	440/24 410 (400-½)		440/40 410 (400-¾)	440/50 410 (400-1)
C CIRCLING	520-1 470 (500-1)		740-2 690 (700-2)	740-2¼ 690 (700-2¼)

SAVANNAH/HILTON HEAD INTL (SAV)
RNAV (GPS) RWY 10