

APP CRS
277°

Rwy Idg
TDZE
Apt Elev

9351
50
50

RNAV (RNP) Y RWY 28
SAVANNAH/HILTON HEAD INTL (SAV)

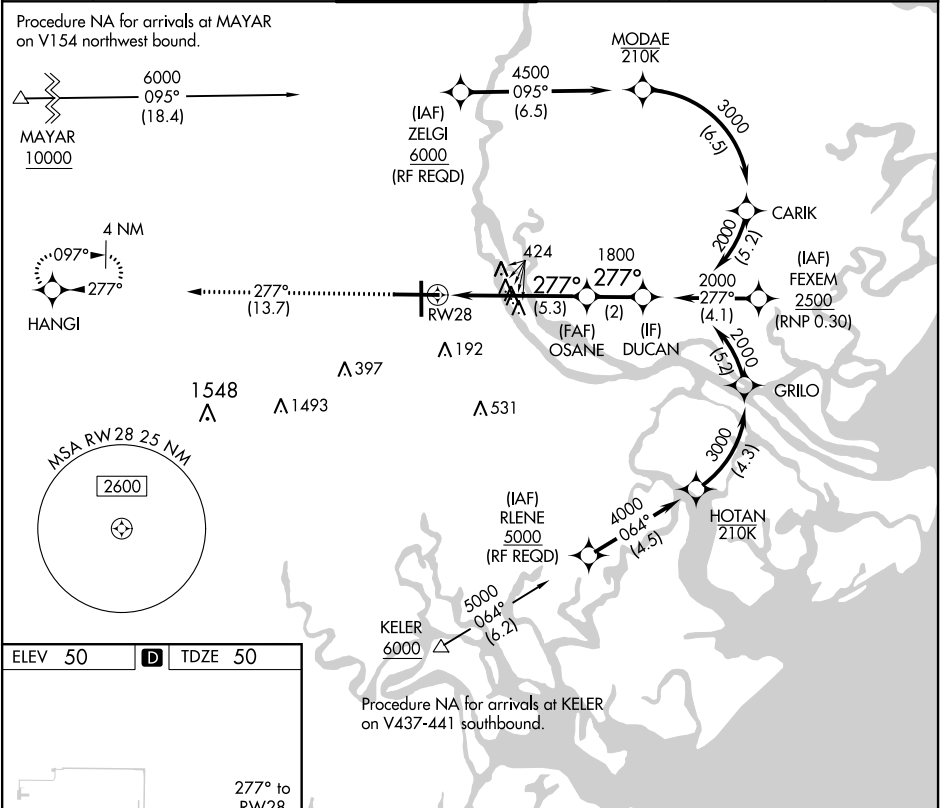
RNP AR APCH. At KELER, and MAYAR: (RNP 1.0). At ZELGI, FEXEM, and RLENE: (RNP 0.30).

▼
▲

For uncompensated Baro-VNAV systems, procedure NA below -15°C or above 54°C.
When local altimeter setting not received, procedure NA.

MISSED APPROACH: Climb to 2500 on track 277° to HANGI and hold.

| | | | | | |
|----------------|------------------------------------|---------------------------------------|------------------------|----------------------------|------------------|
| ATIS 123.75 | SAVANNAH APP CON★ 125.3 371.875 | SAVANNAH TOWER★ 119.1 (CTAF) 257.8 | GND CON 121.9 348.6 | CLNC DEL 119.55 291.775 | UNICOM 122.95 |
|----------------|------------------------------------|---------------------------------------|------------------------|----------------------------|------------------|



ELEV 50

D

TDZE 50

TWR 216

6L

277° to RW28

9351 X 150

7002 X 150

1

2500

tr 277°

HANGI

VGSI and RNAV glidepath not coincident (VGSI Angle 3.00°/TCH 66).

DUCAN

OSANE

1800

277°

2000

1800

GP 3.00°

TCH 52

| | | | | |
|-------------|---|--------|--------------|---|
| CATEGORY | A | B | C | D |
| RNP 0.15 DA | | 404-1 | 354 (400-1) | |
| RNP 0.30 DA | | 471-1¼ | 421 (500-1¼) | |

AUTHORIZATION REQUIRED