

WAAS CH <b>69435</b> <b>W15A</b>	APP CRS <b>149°</b>	Rwy Idg TDZE <b>166</b> Apt Elev <b>166</b>	<b>8014</b>
--	------------------------	---	-------------

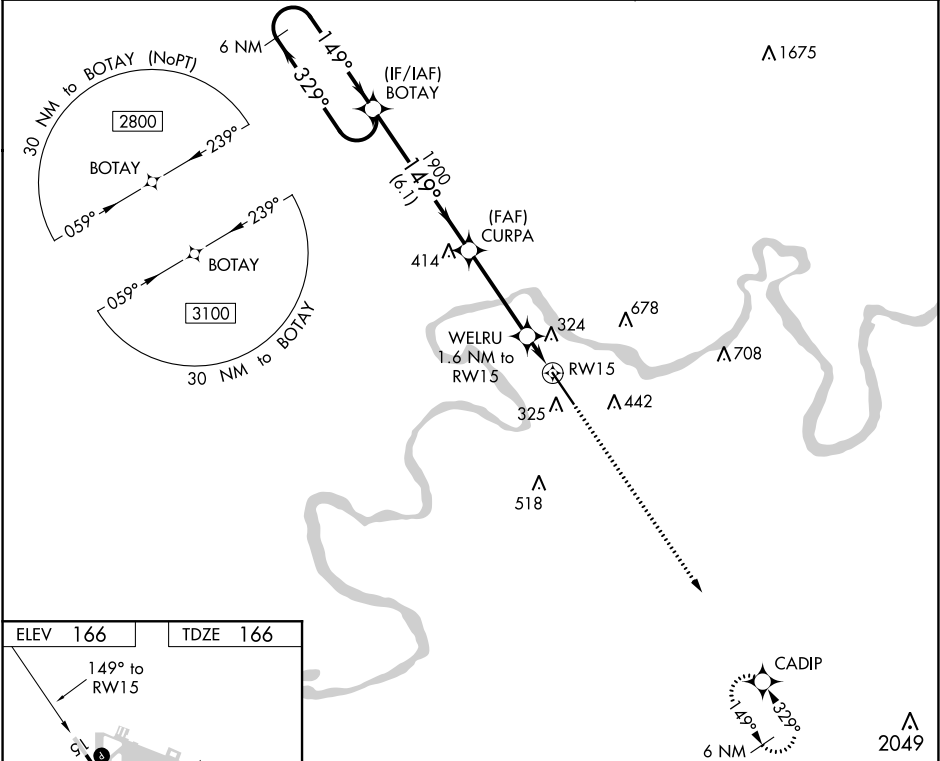
RNAV (GPS) RWY 15

CRAIG FIELD (SEM)

**⚠** Baro-VNAV NA when using Montgomery altimeter setting. For uncompensated Baro-VNAV systems, LNAV/VNAV NA below -15°C (5°F) or above 54°C (130°F). DME/DME RNP-0.3 NA. VDP NA with Montgomery altimeter setting. When local altimeter setting not received, use Montgomery altimeter setting and increase all DA 78 feet, all MDA 80 feet, LPV all Cats visibility ¾ mile, LNAV/VNAV all Cats visibility and LNAV Cats C and D visibility ¼ mile, Circling Cat C visibility ½ mile and Cat D visibility ¼ mile.

MISSED APPROACH:  
Climb to 3100 direct  
CADIP and hold.

AWOS-3PT <b>119.15</b>	MONTGOMERY APP CON ★ <b>124.0 363.025</b>	UNICOM <b>122.7 (CTAF) 0</b>
---------------------------	--	---------------------------------



ELEV 166

TDZE 166

6 NM Holding Pattern BOTAY				VGSi and RNAV glidepath not coincident (VGSi Angle 3.00/TCH 50).				3100	CADIP
2800 ← 329°				CURPA 1900				↑	
GP 3.00° TCH 45				WELRU 1.6 NM to RW15				*LNNAV only	
				*720				*1.1 NM to RW15	
				RW15				RW15	
				6.1 NM				0.5 NM	
				3.7 NM				1.1 NM	
CATEGORY	A			B	C			D	
LPV DA				416-¾	250 (300-¾)				
LNAV/VNAV DA				569-1⅓	403 (500-1⅓)				
LNAV MDA	560-1			394 (400-1)	560-1⅓			394 (400-1⅓)	
Ⓢ CIRCLING	660-1			760-1	760-1½			1040-2¾	
			494 (500-1)	594 (600-1)	594 (600-1½)			874 (900-2¾)	