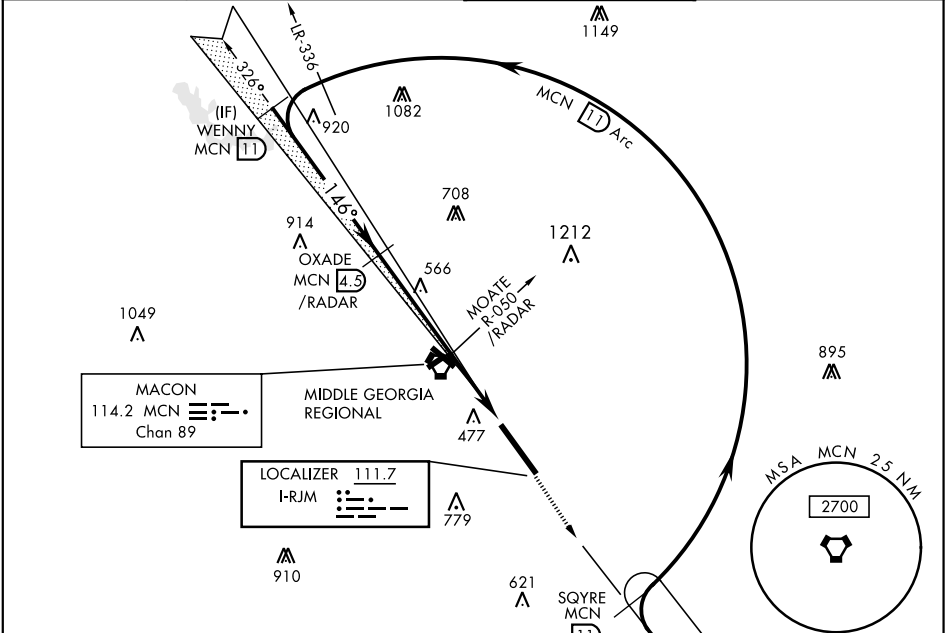


WARNER ROBINS, GEORGIA

ILS or LOC RWY 15

LOC I-RJM 111.7	APCH CRS 146°	Rwy ldg 12,001 THRE 293 Arpt Elev 294	AL-442 [USAF]	ROBINS AFB (KWRB)
* When ALS inop, increase RVR to 40 and vis to ¾ mile. ** When ALS inop, increase CAT AB RVR to 55 and vis to 1 mile, CAT CDE vis to 1 ⅝ miles. *** Circling not authorized W of Rwy 15-33.			ALSF-1 	MISSED APPROACH: Climb to 2700 out MCN R-141 to SQYRE and hold.

ATIS 119.475 273.475	ATLANTA APP CON 124.2 279.6	ROBINS TOWER 133.225 257.975	GND CON 121.85 275.8
--------------------------------	---------------------------------------	----------------------------------------	--------------------------------



DME or RADAR REQUIRED
VOR or TACAN REQUIRED

EMERG SAFE ALT 100 NM 3700

ELEV 294	THRE 293						
		WENNY Intcp Lczt	OXADE 4.5 /RADAR	MOATE MCN R-050 /RADAR	SQYRE R-141	ZOTSO R-141	
		4000	2600	1280	4000	4000	
		GS 2.70° TCH 54	7.1 NM	.5 NM			
		CATEGORY	A	B	C	D	E
		S-ILS 15 *	493/24		200	(200-½)	
		S-LOC 15 **	680/24	387 (400-½)	680/35	387 (400-¾)	
		CIRCLING ***	780-1	486 (500-1)	840-1½ 546 (600-1½)	960-2 666 (700-2)	1100-2¾ 806 (900-2¾)

ILS or LOC RWY 15

SE-4, 03 DEC 2020 to 31 DEC 2020

SE-4, 03 DEC 2020 to 31 DEC 2020