

WARNER ROBINS, GEORGIA

RNAV (GPS) RWY 15

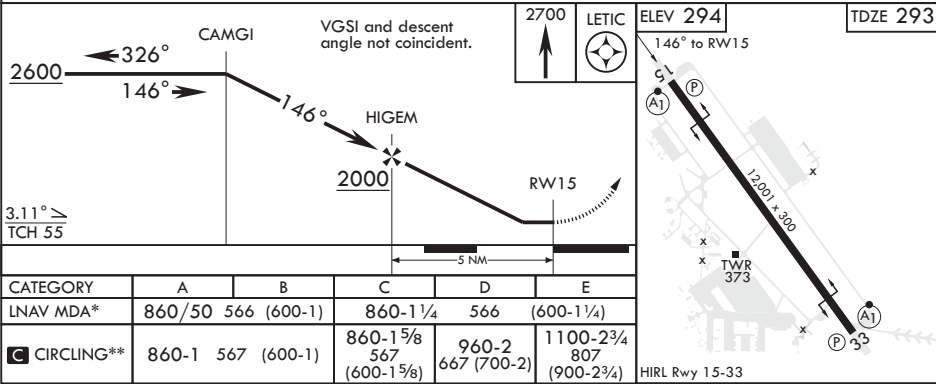
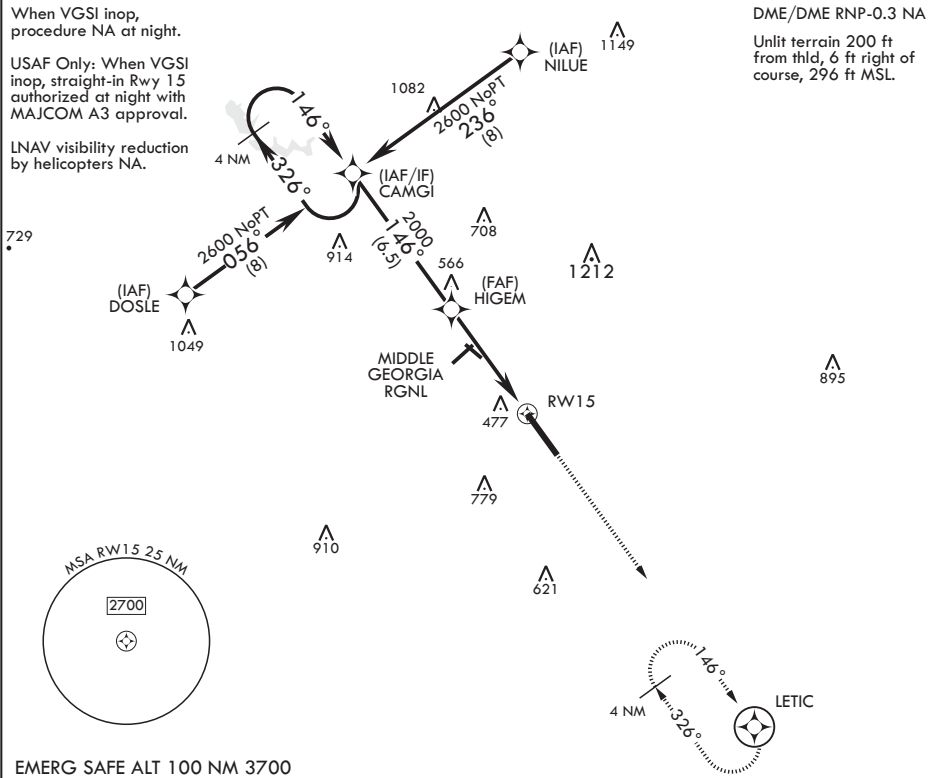
APCH CRS	Rwy Idg	12,001
146°	TDZE	293
	Arpt Elev	294

AL-442 (USAF)

ROBINS AFB (KWRB)

* When ALS inop, increase CAT AB RVR to 55, vis to 1 mile, CAT CDE vis to 1 5/8 miles. ** Circling NA SW of Rwy 15-33.	ALSIF-1 	MISSED APPROACH: Climb to 2700 direct LETIC and hold.
---	-------------	---

ATIS 119.475 273.475	ATLANTA APP CON/DEP CON 124.2 279.6	TOWER 133.225 257.975	GND CON 121.85 275.8
-------------------------	--	--------------------------	-------------------------



WARNER ROBINS, GEORGIA

32°38'N - 83°36'W

ROBINS AFB (KWRB)

Amtdt 4 31JAN19

RNAV (GPS) RWY 15

SE-4, 03 DEC 2020 to 31 DEC 2020

SE-4, 03 DEC 2020 to 31 DEC 2020