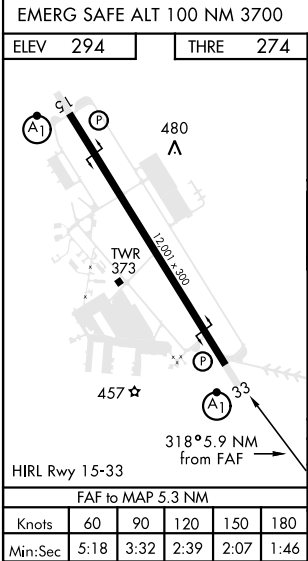
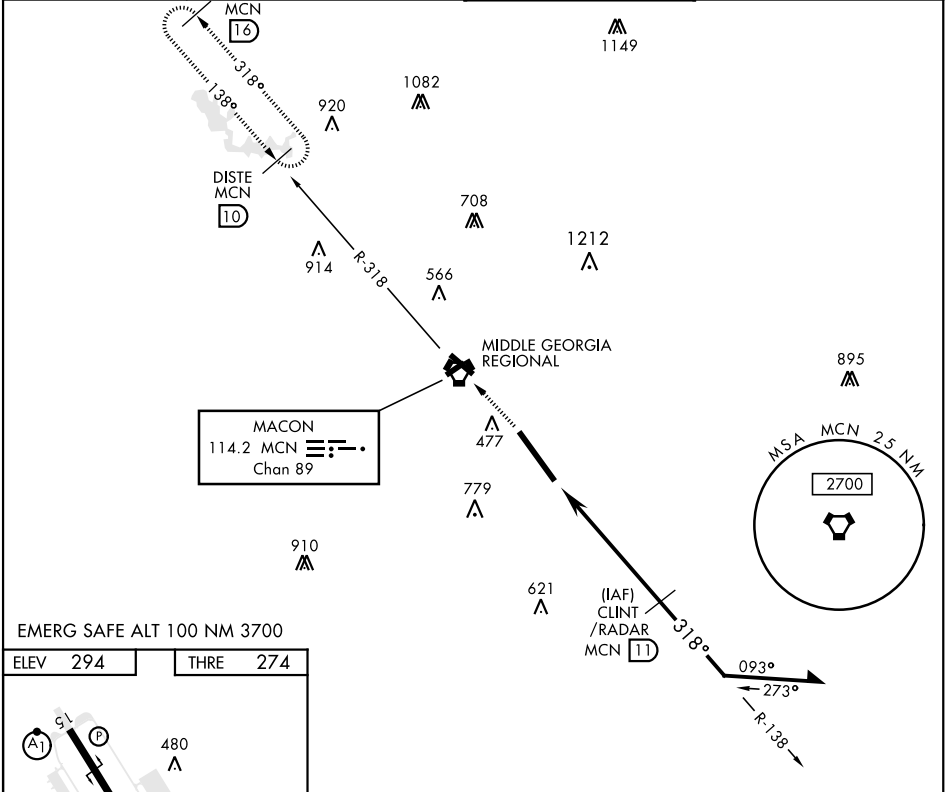






VOR/DME Z RWY 33

VORTAC MCN 114.2 Chan 89	APCH CRS 318°	Rwy Idg 12,001 THRE 274 Arpt Elev 294	AL-442 [USAF]	ROBINS AFB (KWRB)
* When ALS inop, increase CAT AB RVR to 55 and vis to 1 mile, CAT CDE vis to 1½ miles. ** Circling not authorized W of Rwy 15-33.			ALSF-1 	MISSED APPROACH: Climb to 2600 to MCN VORTAC then out MCN R-318 to DISTE and hold.
ATIS 119.475 273.475	ATLANTA APP CON 124.2 279.6	ROBINS TOWER 133.225 257.975	GND CON 121.85 275.8	



2600 ↑		MCN 		MCN R-318 ↑		CLINT /RADAR 		Remain within 15 NM	
VORTAC 		NOTKE 		6.8 ↓		138° ↗		2600	
		5.7 ↓		5.3 NM →		318° ↖		2000	
		.6 →						2.68° TCH 56 ↘	
CATEGORY	A		B		C		D		E
S-33 *	780/24 507 (500-½)		780/55 507 (500-1)						
 CIRCLING **	780-1 486 (500-1)		840-1½ 546 (600-1½)		960-2 666 (700-2)		1100-2¾ 806 (900-2¾)		

VOR/DME Z RWY 33

SE-4, 03 DEC 2020 to 31 DEC 2020

SE-4, 03 DEC 2020 to 31 DEC 2020