

LOC I-PDK 111.1	APP CRS 206°	Rwy Idg TDZE Apt Elev	4996 991 998
---------------------------	------------------------	-----------------------------	-----------------------------------------

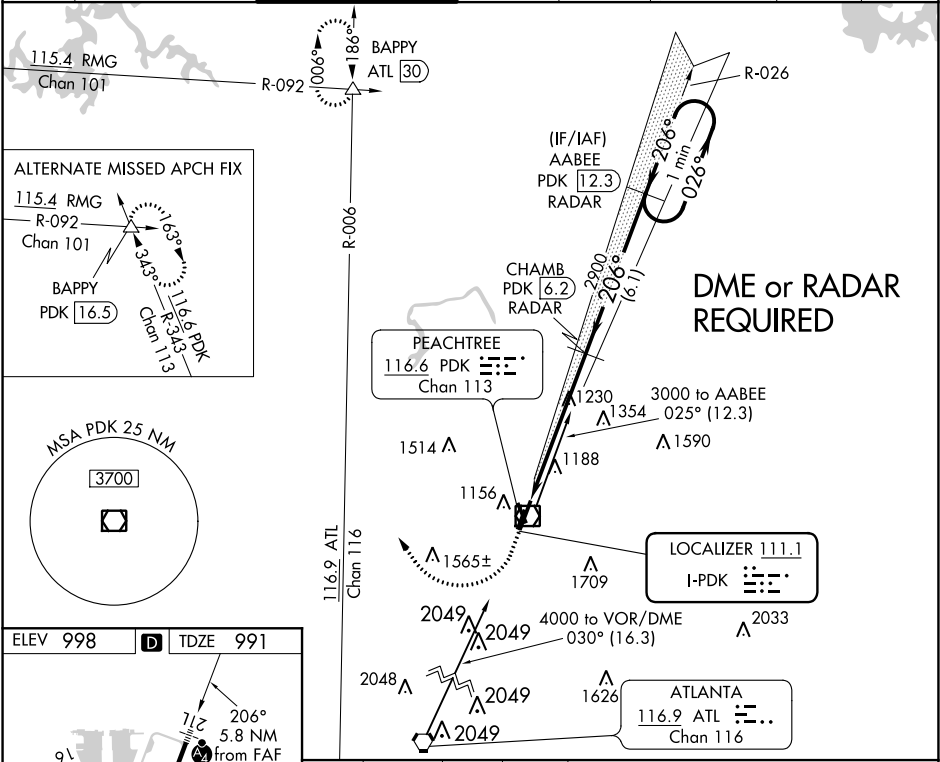
ILS or LOC RWY 21L
DEKALB-PEACHTREE (PDK)

▼ Night landing: Rwy 3L, 16 NA. Helicopter visibility reduction below 3/4 SM NA. When local altimeter setting not received, use Fulton County Airport-Brown Field altimeter setting and increase S-ILS 21L DA to 1378 and all MDA 60 feet; increase S-ILS 21L all Cats visibility 1/8 mile, increase S-LOC 21L Cats C/D and Circling Cat C visibility 1/4 mile.

MALSF

MISSED APPROACH: Climb to 1600 then climbing right turn to 4000 on heading 330° and ATL VORTAC R-006 to BAPPY INT/ATL 30 DME and hold.

ATIS 128.4	ATLANTA APP CON 126.975 239.275	PEACHTREE TOWER ★ 120.9(CTAF) 281.5	GND CON 121.6	CLNC DEL 125.2	CLNC DEL 120.9 (When twr closed)	UNICOM 122.95	120.0
----------------------	-------------------------------------------	-----------------------------------------------	-------------------------	--------------------------	-----------------------------------------------	-------------------------	--------------



ELEV 998	D	TDZE 991	1600 4000 ATL R-006 BAPPY Glideslope unusable for coupled approach below 1900. CHAMB PDK [6.2] RADAR AABEE PDK [12.3] RADAR One Minute Holding Pattern			
			GS 3.00° TCH 58			
HIRL Rwy 3R-21L MIRL Rwy 16-34 and 3L-21R REIL Rwy 3R and 34						
FAF to MAP 5.8 NM						
Knots	60	90	120	150	180	
Min:Sec	5:48	3:52	2:54	2:19	1:56	
CIRCLING	1580-1 582 (600-1)		1840-2 1/2 842 (900-2 1/2)		2060-3 1062 (1100-3)	