




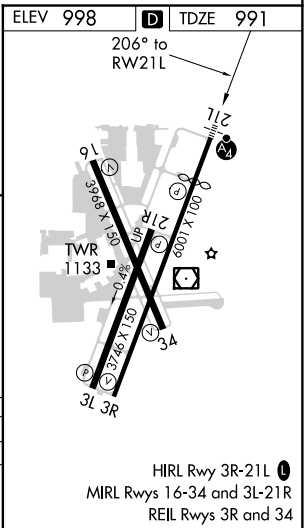
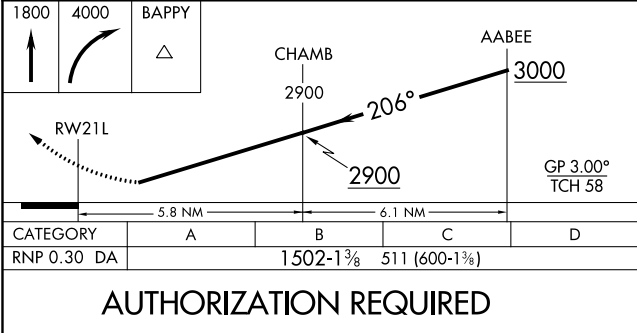
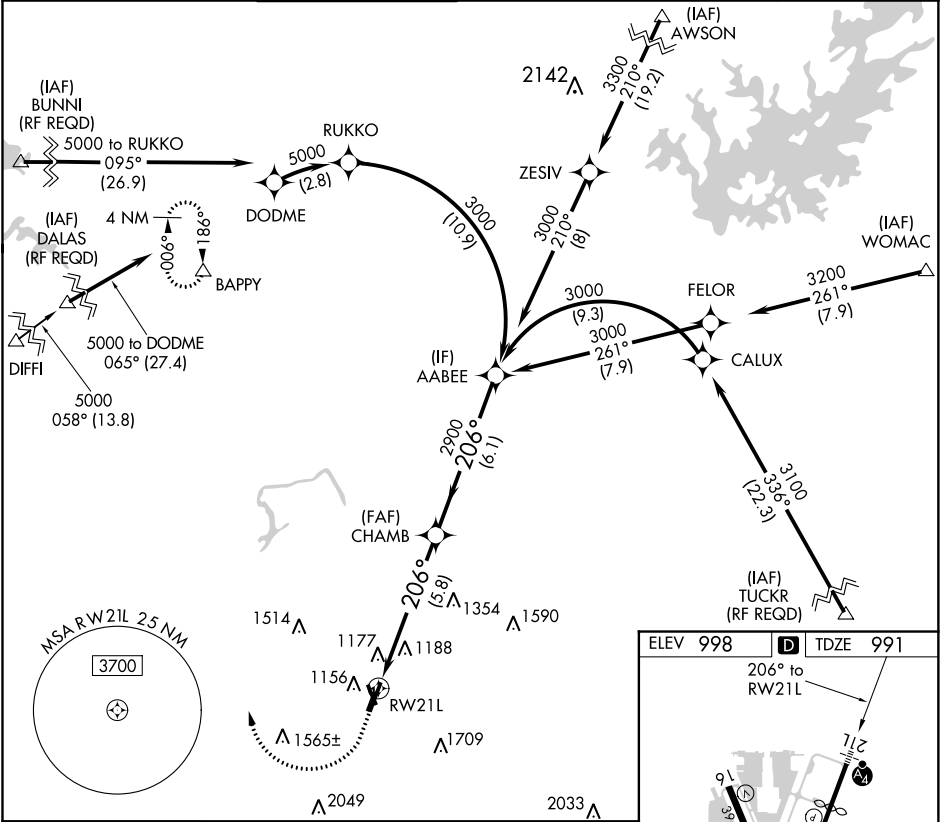
APP CRS	Rwy Idg	4996
206°	TDZE	991
	Apt Elev	998

RNAV (RNP) Z RWY 21L

DEKALB-PEACHTREE (PDK)

 For uncompensated Baro-VNAV systems, procedure NA below 1°C (37°F) or above 54°C (130°F). For inop MALSF, increase RNP 0.30 all Cats visibility to 1¾. GPS required.	MALSF  	MISSED APPROACH: Climb to 1800 then climbing right turn to 4000 direct BAPPY and hold.
--	--	--

ATIS 128.4	ATLANTA APP CON 126.975 239.275	PEACHTREE TOWER ★ 120.9(CTAF) 281.5	GND CON 121.6	CLNC DEL 125.2	CLNC DEL 120.9 (When twr closed)	UNICOM 122.95	120.0
---------------	------------------------------------	--	------------------	-------------------	--	------------------	-------



SE-4, 03 DEC 2020 to 31 DEC 2020

SE-4, 03 DEC 2020 to 31 DEC 2020