

VORTAC LDK	APP CRS	Rwy Idg	6499
117.8	052°	TDZE	159
Chan 125		Apt Elev	170

VOR or TACAN RWY 4

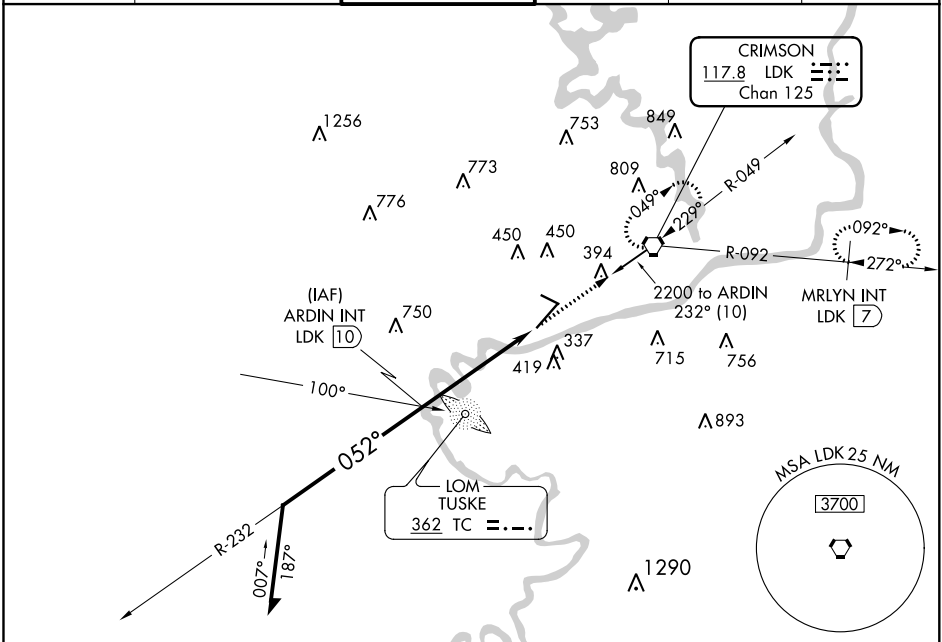
TUSCALOOSA NATIONAL (TCL)

DME or ADF required.  
Night landing: Rwy 12,30 NA.

MALSR

MISSED APPROACH: Climb to 2200 direct LDK VORTAC and hold. (TACAN aircraft continue to 2500 via LDK R-092 to MRLYN INT/7 DME and hold E, right turns, 272° inbound.)

ASOS 132.825	BIRMINGHAM APP CON 120.15 269.25	TUSCALOOSA TOWER ★ 126.3(CTAF) 0 256.7	GND CON 121.8 257.95	CLNC DEL 120.775	UNICOM 122.95
-----------------	-------------------------------------	---	-------------------------	---------------------	------------------



ELEV 170

TDZE 159

Remain within 10 NM

ARDIN INT LDK 10

2200

232°

052°

1700

2.86°

TCH 50

4.9 NM

LDK 5.1

LDK

2500

LDK R-092

MRLYN INT LDK 7

TACAN ONLY

CATEGORY	A	B	C	D
S-4	620-1/2 461 (500-1/2)		620-3/4 461 (500-3/4)	620-1 461 (500-1)
CIRCLING	800-1 630 (700-1)		800-1 3/4 630 (700-1 3/4)	800-2 630 (700-2)

052° 4.9 NM from FAF

45

4001 X 100

6495 X 150

TWR 236

MIRL Rwy 12-30

HIRL Rwy 4-22 0

FAF to MAP 4.9 NM

Knots	60	90	120	150	180
Min:Sec	4:54	3:16	2:27	1:58	1:38