

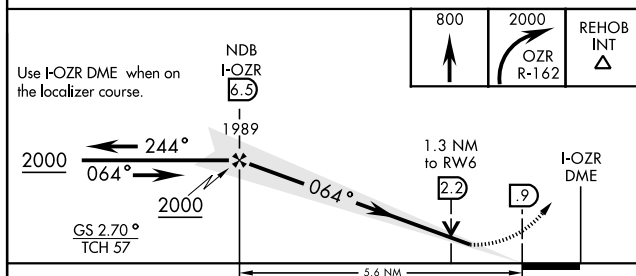
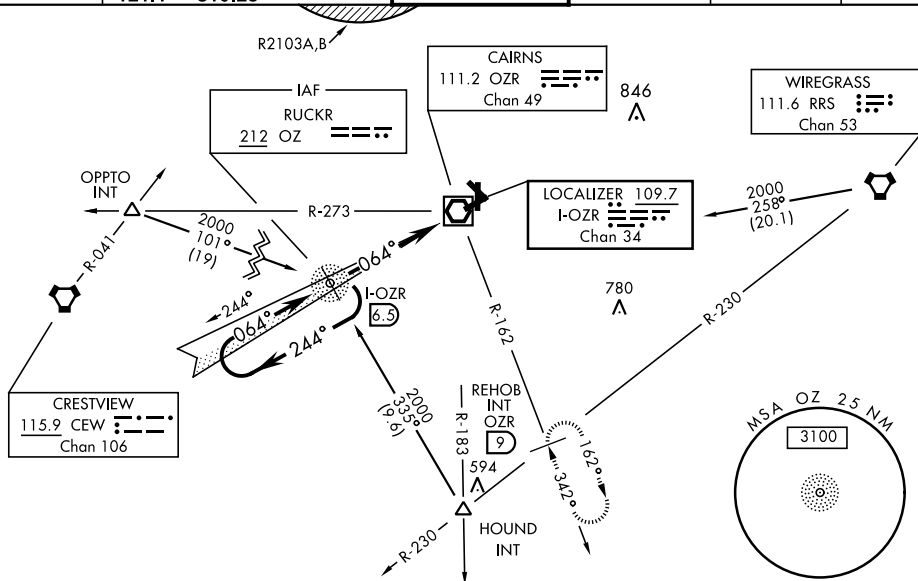


## ILS or LOC RWY 6

LOC I-OZR <b>109.7</b> Chan <b>34</b>		APCH CRS <b>064°</b>		Rwy Idg <b>4546</b> TDZE <b>298</b> Arpt Elev <b>301</b>		AL-577 [USA]		CAIRNS AAF (KOZR)			
ADF or DME required.						<div>MALSR </div>		MISSED APPROACH: Climb to 800 then climbing right turn to 2000 via OZR VOR/DME R-162 to REHOB INT (OZR 9 DME) and hold; or when directed by ATC, climb to 800 then climbing left turn to 2000 heading 290° within 10 NM (RADAR required).			
<div> * When ALS inop, increase CAT ABC vis to 1 mile, CAT D RVR to 60, vis to 1¼ miles.</div>											
ATIS <b>111.2</b> <b>316.15</b>		CAIRNS APP CON <b>125.4 327.125</b> 021°-120° <b>133.75 270.35</b> 121°-219° <b>133.45 239.275</b> 220°-340° <b>121.1 319.25</b> 341°-020°				CAIRNS TOWER ★ <b>135.2 (CTAF)</b> <b>248.55</b>		GND CON <b>121.9</b> <b>288.25</b>		CLNC DEL <b>118.075</b> <b>380.1</b>	PAR



CATEGORY	A	B	C	D
S-ILS 6	498/24	200	(200-½)	
S-LOC 6 *	760/24	462 (500-½)	760/40 462 (500-¾)	760/50 462 (500-1)
CIRCLING	780-1 479 (500-1)	820-1 519 (600-1)	860-1½ 559 (600-1½)	900-2 599 (600-2)

