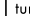
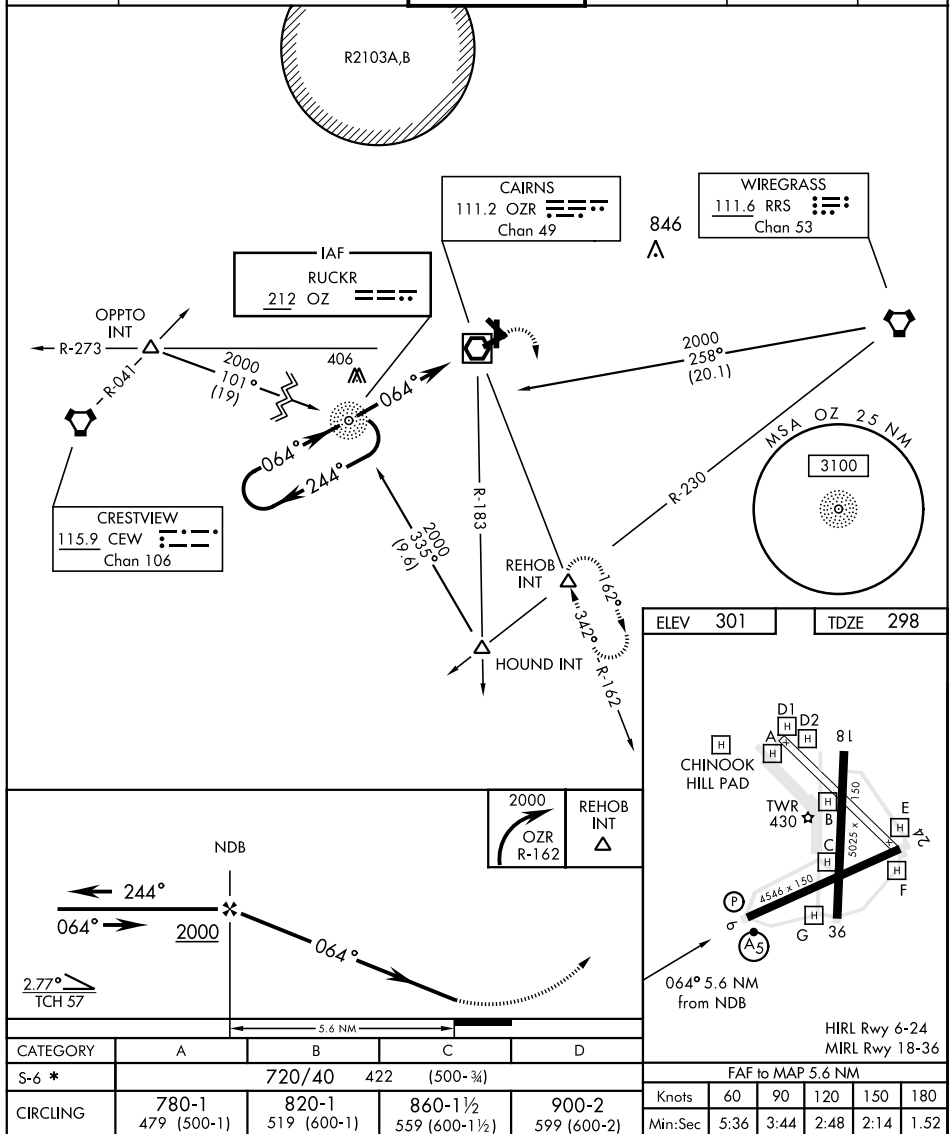


NDB RWY 6

NDB OZ <u>212</u>		APCH CRS 064°		Rwy Idg 4546 TDZE 298 Arpt Elev 301		AL-577 [USA]		CAIRNS AAF (KOZR)	
▼ * When ALS open, increase CAT AB RVR to 50, visibility to 1 mile; CAT CD RVR to 60, vis to 1 1/4 miles. Visibility reduction by helicopters NA.						MALSR 		MISSED APPROACH: Climbing right turn to 2000 via OZR VOR/DME R-162 to REHOB INT and hold; or when directed by ATC, climbing left turn to 2000 heading 290° within 10 NM (RADAR required).	
CAIRNS APP CON		CAIRNS TOWER ★		GND CON		CLNC DEL		PAR	
ATIS	125.4	327.125	021°-120°						
111.2	133.75	270.35	121°-219°	135.2 (CTAF)	121.9	118.075			
316.15	133.45	239.275	220°-340°	248.55	288.25	380.1			
	121.1	319.25	341°-020°						



FORT RUCKER, ALABAMA

31° 16' N-85° 43' W

CAIRNS AAF (KOZR)

Orig C 05NOV20

NDB RWY 6

SE-4, 03 DEC 2020 to 31 DEC 2020

SE-4, 03 DEC 2020 to 31 DEC 2020