

WAAS  
CH **56640**  
**W04A**

APP CRS  
**045°**

Rwy Idg  
TDZE **242**  
Apt Elev **264**

**RNAV (GPS) RWY 4**

THOMASVILLE RGNL (TVI)

▼

⚠

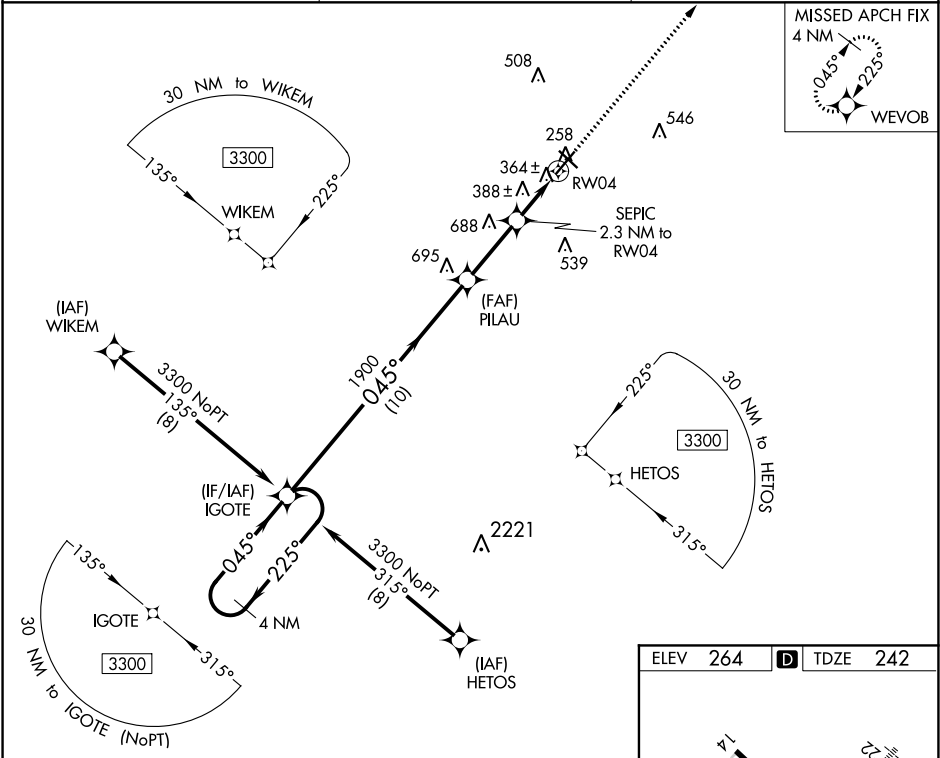
Rwy 4 helicopter visibility reduction below 1 SM NA. DME/DME RNP-0.3 NA. Straight-in Rwy 4 NA at night, Circling Rwy 4 NA at night. When local altimeter setting not received, use Valdosta altimeter setting: increase all MDAs 100 feet and all Cat C and D visibilities ⅓ SM.

MISSED APPROACH:  
Climb to 2500 direct  
WEVOB and hold.

AWOS-3PT  
**119.175**

VALDOSTA APP CON★  
**126.6 285.6**

UNICOM  
**123.075 (CTAF)**



4 NM Holding Pattern

IGOTE

3300

225°

045°

045°

1900

1020

10 NM

2.8 NM

2.3 NM

2500

WEVOB

PILAU

SEPIC

2.3 NM to RW04

RW04

TCH 54

3.00°

CATEGORY	A	B	C	D
LP MDA	620-1 378 (400-1)			
LNAV MDA	640-1 398 (400-1)	640-1⅓ 398 (400-1⅓)		
CIRCLING	700-1 436 (500-1)	800-1 536 (600-1)	900-1¾ 636 (700-1¾)	1040-2½ 776 (800-2½)

LIRL Rwy 14-32

HIRL Rwy 4-22

ELEV 264

TDZE 242

14

22

32

400 X 101

400 X 100

10.3° UP

045° to RW04