

LOC I-CSG 110.3	APP CRS 056°	Rwy Idg TDZE Apt Elev 6997 380 397
---------------------------	------------------------	--

ILS or LOC RWY 6

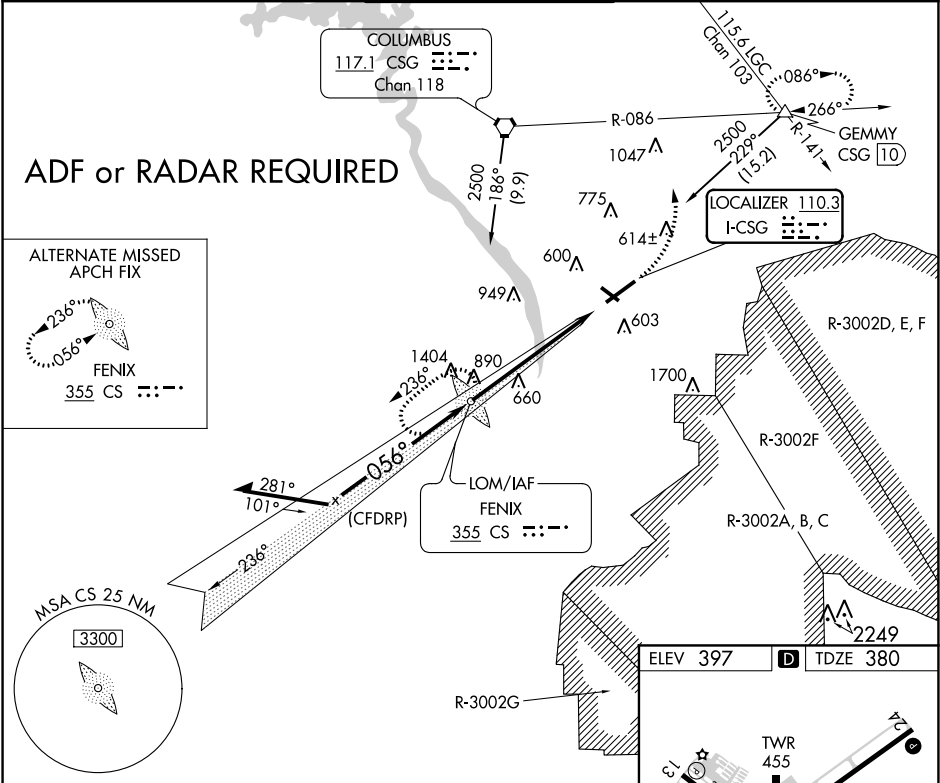
COLUMBUS (CSG)

Night landing: Rwy 13, 31 NA.

MALSR

MISSED APPROACH: Climb to 1300 then climbing left turn to 2500 on heading 010° and CSG VORTAC R-086 to GEMMY INT/CSG 10 DME and hold.

ATIS 127.75	ATLANTA APP CON ★ 125.5 323.1	COLUMBUS TOWER ★ 120.1 (CTAF) 257.8	GND CON 121.9 348.6	UNICOM 122.95
-----------------------	---	---	-------------------------------	-------------------------



Remain within 10 NM

GS 2.61°
TCH 49

1300

2500

CSG R-086

GEMMY

hdg 010°

CATEGORY	A	B	C	D
S-ILS 6	580/24 200 (200-1/2)			
S-LOC 6	980/24	600 (600-1/2)	980-1 1/4	600 (600-1 1/4)
CIRCLING	980-1	583 (600-1)	980-1 3/4	980-2

REIL Rwy 24

HIRL Rwy 6-24

MIRL Rwy 13-31

REIL Rwys 13 and 31

FAF to MAP 6.1 NM

Knots	60	90	120	150	180
Min:Sec	6:06	4:04	3:03	2:26	2:02

TWR 455

056° 6.1 NM from FAF