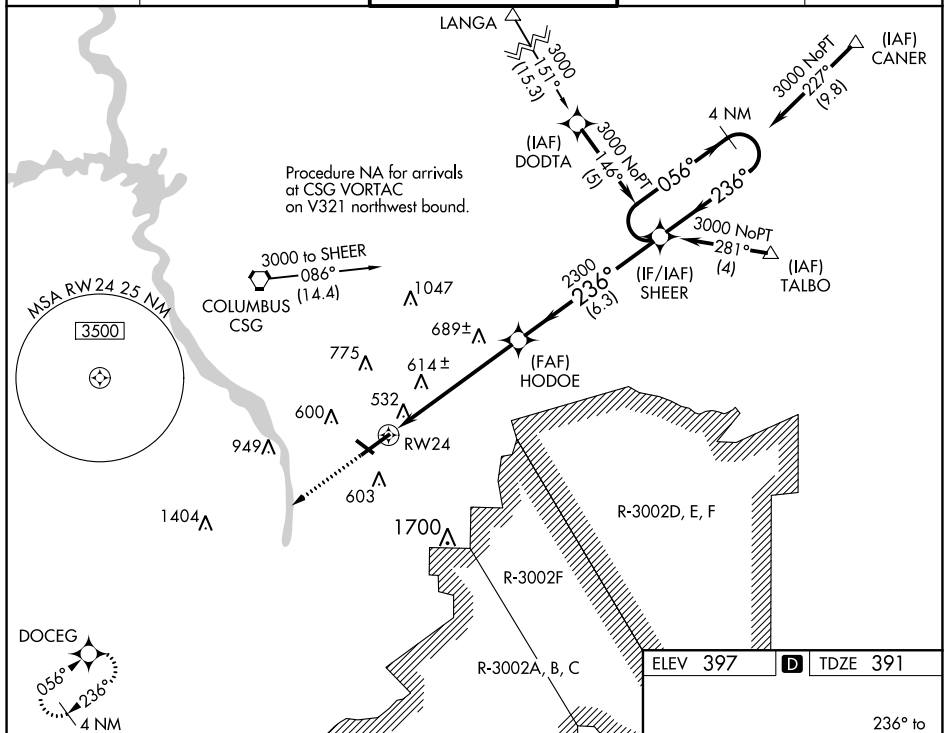


RNAV (GPS) RWY 24  
COLUMBUS (CSG)

**T** For uncompensated Baro-VNAV systems, LNAV/VNAV NA below -19°C (-2°F) or above 54°C (130°F). Circling Rwy 13, 31 NA at night.  
Rwy 24 helicopter visibility reduction below  $\frac{3}{4}$  SM NA.

**MISSED APPROACH:** Climb to 2500 direct  
DOCEG and hold.

ATIS 127.75	ATLANTA APP CON ★ 125.5 323.1	COLUMBUS TOWER ★ 120.1 (CTAF) 0 257.8	GND CON 121.9 348.6	UNICOM 122.95
----------------	----------------------------------	--	------------------------	------------------



2500  
↑  
DOCEG

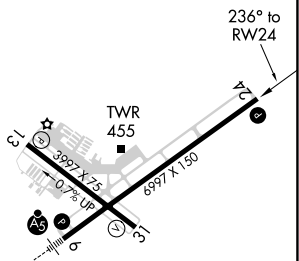
VGS1 and RNAV glidepath not coincident  
(VGS1 Angle 3.00/TCH 64).

4 NM Holding Pattern  
056°  
236°  
3000  
GP 3.00°  
TCH 50

HODOE  
2300  
2300  
236°  
236°

RW24  
5.7 NM  
6.3 NM  
SHEER

CATEGORY	A	B	C	D
LPV DA	740-1 $\frac{1}{8}$	349 (400-1 $\frac{1}{8}$ )		
RNAV/ VNAV DA	920-1 $\frac{3}{4}$	529 (600-1 $\frac{3}{4}$ )		
RNAV MDA	940-1 549 (600-1)	940-1 $\frac{5}{8}$ 549 (600-1 $\frac{5}{8}$ )		
CIRCLING	940-1 543 (600-1)	940-1 $\frac{5}{8}$ 543 (600-1 $\frac{5}{8}$ )	960-2 563 (600-2)	



REIL Rwy 24 **L**  
HIRL Rwy 6-24 **L**  
MIRL Rwy 13-31 **L**  
REIL Rwy 13 and 31

SE-4, 03 DEC 2020 to 31 DEC 2020