

LOC/DME I-DCU 110.55 Chan 42 (Y)	APP CRS 185°	Rwy Idg 6107 TDZE 592 Apt Elev 592
--	------------------------	---

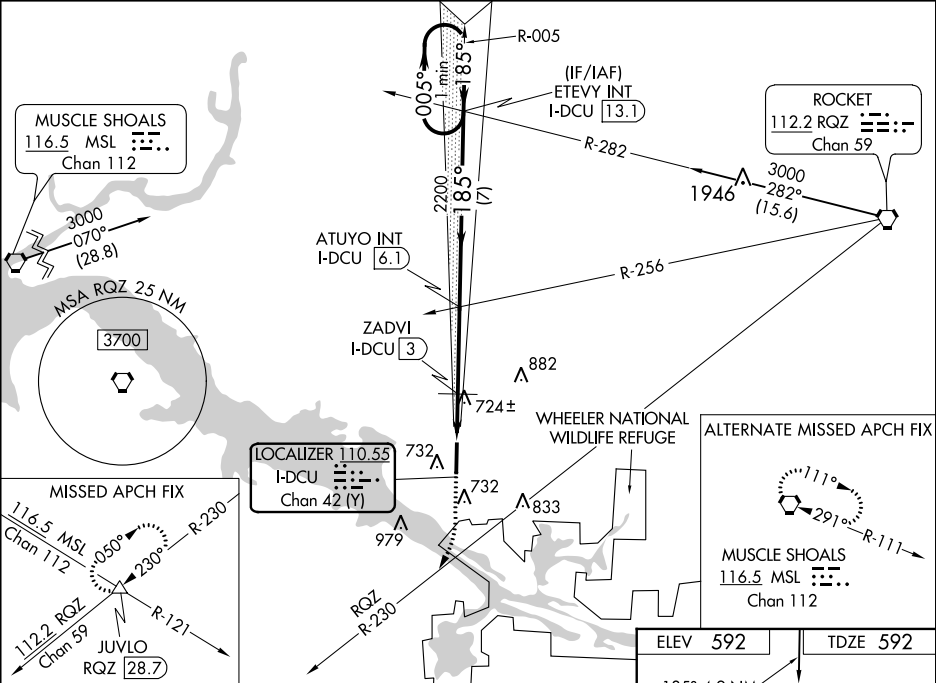
ILS Z or LOC Z RWY 18

PRYOR FIELD RGNL (DCU)

⚠ When local altimeter setting not received, use Huntsville Intl-Carl T Jones Field altimeter setting: increase DA to 817 feet; increase all MDA 40 feet and all S-LOC 18 visibility Cats C and D ½ mile. VDP NA with Huntsville Intl-Carl T Jones Field altimeter setting.

MISSSED APPROACH: Climb to 1700 on 185° then climbing right turn to 3000 on RQZ VORTAC R-230 to JUVLO INT/RQZ 28.7 DME and hold.

ASOS 118.375	HUNTSVILLE APP CON★ 118.05 239.0	UNICOM 123.075 (CTAF) 0
------------------------	--	--



One Minute Holding Pattern

ETEYV INT I-DCU [13.1]

ATUYO INT I-DCU [6.1]

ZADVI INT I-DCU [3]

JUVLO RQZ R-230

3000 ← 005° → 185° → 1700 → 3000 → JUVLO

GS 3.00° TCH 47

*1180 when using Huntsville Intl-Carl T Jones Field altimeter setting.

*LOC only.

ELEV 592 TDZE 592

185° 4.9 NM from FAF

81

100 X 1016

636

36

HIRL Rwy 18-36 **0**

REIL Rws 18 and 36 **0**

Knots	60	90	120	150	180
Min:Sec	4:54	3:16	2:27	1:58	1:38

CATEGORY	A	B	C	D
S-ILS 18	792-¾ 200 (200-¾)			
S-LOC 18	1160-1	568 (600-1)	1160-1½	568 (600-1½)
CIRCLING	1160-1	568 (600-1)	1340-2¼ 748 (800-2¼)	1340-2½ 748 (800-2½)
ZADVI FIX MINIMUMS				
S-LOC 18	980-1	388 (400-1)	980-1½	388 (400-1½)
CIRCLING	1040-1 448 (500-1)	1060-1 468 (500-1)	1340-2¼ 748 (800-2¼)	1340-2½ 748 (800-2½)