

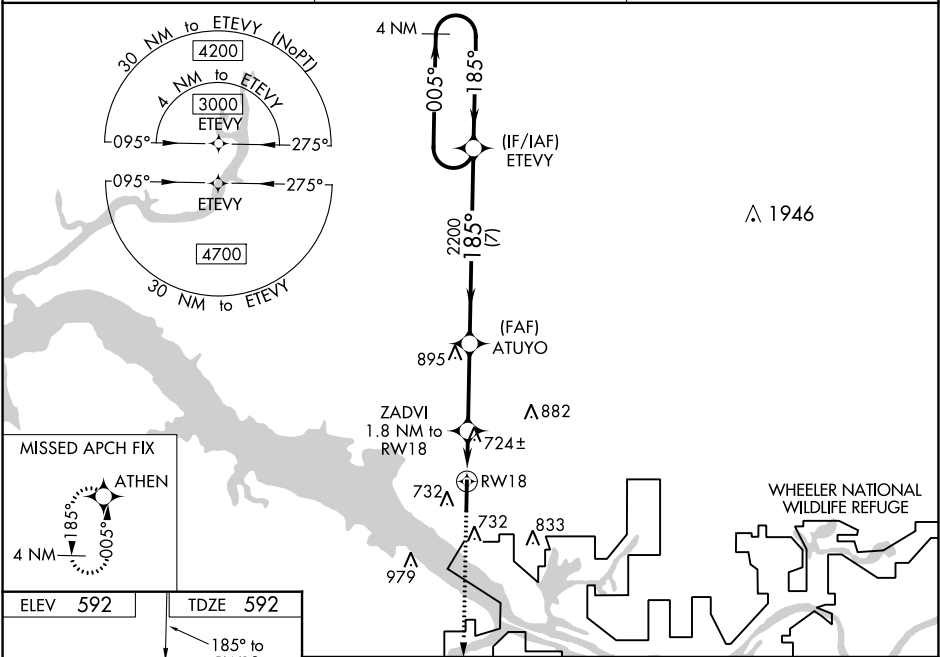
WAAS CH 82200 W18A	APP CRS 185°	Rwy Idg TDZE Apt Elev 592	6107 592 592
--	------------------------	--	---

RNAV (GPS) RWY 18
PRYOR FIELD RGNL (DCU)

⚠ DME/DME RNP-0.3 NA. When local altimeter setting not received, use Huntsville Intl-Carl T. Jones Field altimeter setting: increase LPV DA to 817 and LNAV/VNAV DA to 920 and all visibilities 1/8 mile. Increase all MDA 40 feet and LNAV Cat C and D visibility 1/8 mile. VDP and Baro-VNAV NA when using Huntsville-Carl T. Jones Field altimeter setting. For uncompensated Baro-VNAV systems, LNAV/VNAV NA below -11°C (13°F) or above 54°C (130°F).

MISSED APPROACH:
Climb to 3000 direct
ATHEN and hold.

ASOS 118.375	HUNTSVILLE APP CON* 118.05 239.0	UNICOM 123.075 (CTAF) 0
------------------------	--	-----------------------------------



MISSED APCH FIX

ATHEN

4 NM

185°

ELEV **592**

TDZE **592**

185° to RW18

81

001 x 0019

636

36

HIRL Rwy 18-36 0

REIL Rws 18 and 36 0

3000 ATHEN

***LNAV only**

ZADVI 1.8 NM to RW18

***1.1 NM to RW18**

ATUYO 2200

ETE VY 4 NM Holding Pattern

005° 185° 185° 3000

GP 3.00° TCH 47

1180 2200

1.1 NM 0.7 3.1 NM 7 NM

CATEGORY	A	B	C	D
LPV DA	792-3/4		200 (200-3/4)	
LNAV/VNAV DA	895-1		303 (400-1)	
LNAV MDA	980-1 388 (400-1)		980-1 388 (400-1 1/8)	
CIRCLING	1040-1 448 (500-1)	1060-1 468 (500-1)	1340-2 748 (800-2 1/4)	1340-2 748 (800-2 1/2)

SE-4, 03 DEC 2020 to 31 DEC 2020

SE-4, 03 DEC 2020 to 31 DEC 2020